



Beaumont Mews, W1G

£850 Per week

Set just off Marylebone High Street, this newly refurbished mews house comprises a large open-plan kitchen and reception room to the ground floor. The house further benefits from two double bedrooms, a study and family bathroom.

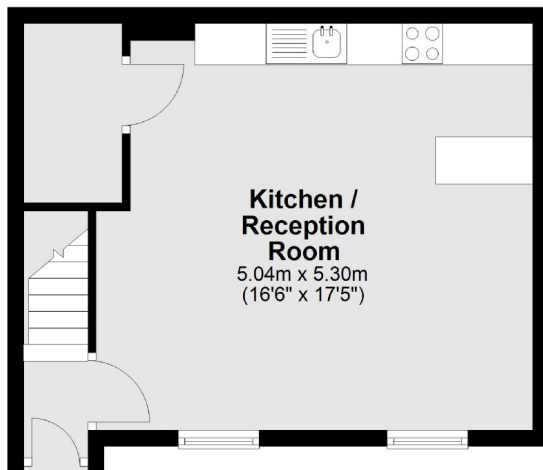
Beaumont Mews is ideally located around the corner from Marylebone High Street which offers an array of supermarkets, cafes, restaurants and shops.

Features

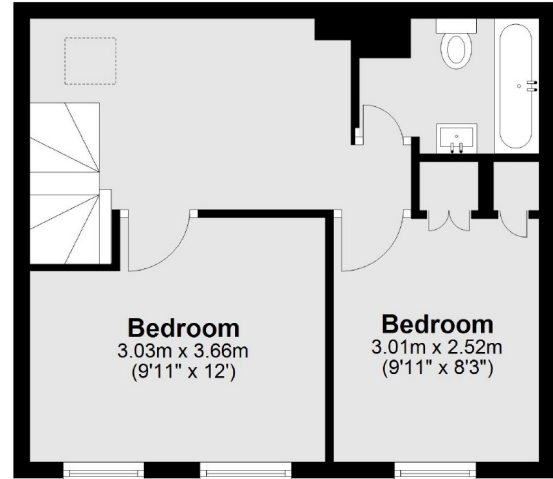
Newly Refurbished
Mews House
Two Double Bedrooms
Study
Marylebone Village
Unfurnished

Beaumont Mews, London, W1G

Ground Floor



First Floor



Total area: approx. 65.7 sq. metres (706.8 sq. feet)