



Portland Place, W1B

£1,900,000

Dexters



Portland Place, W1B

A charming three-bedroom apartment situated on the seventh floor of this beautiful period building with views towards the Park Crescent Gardens and Regent's Park.

Measuring 1184 sq ft and overlooking Portland Place, this lateral apartment is located in the esteemed building of 88 Portland Place. There is a large reception room with feature fireplace and pocket sliding doors creating a second reception room or alternatively be used as an additional bedroom. The kitchen is located off the bright entrance hall. There are three further bedrooms, two of them with built in wardrobes, a separate bathroom, shower room and guest WC.

Set on a wider than average road, the location offers residents permit parking and access to Regent's Park Tube Station which is a short walk away.

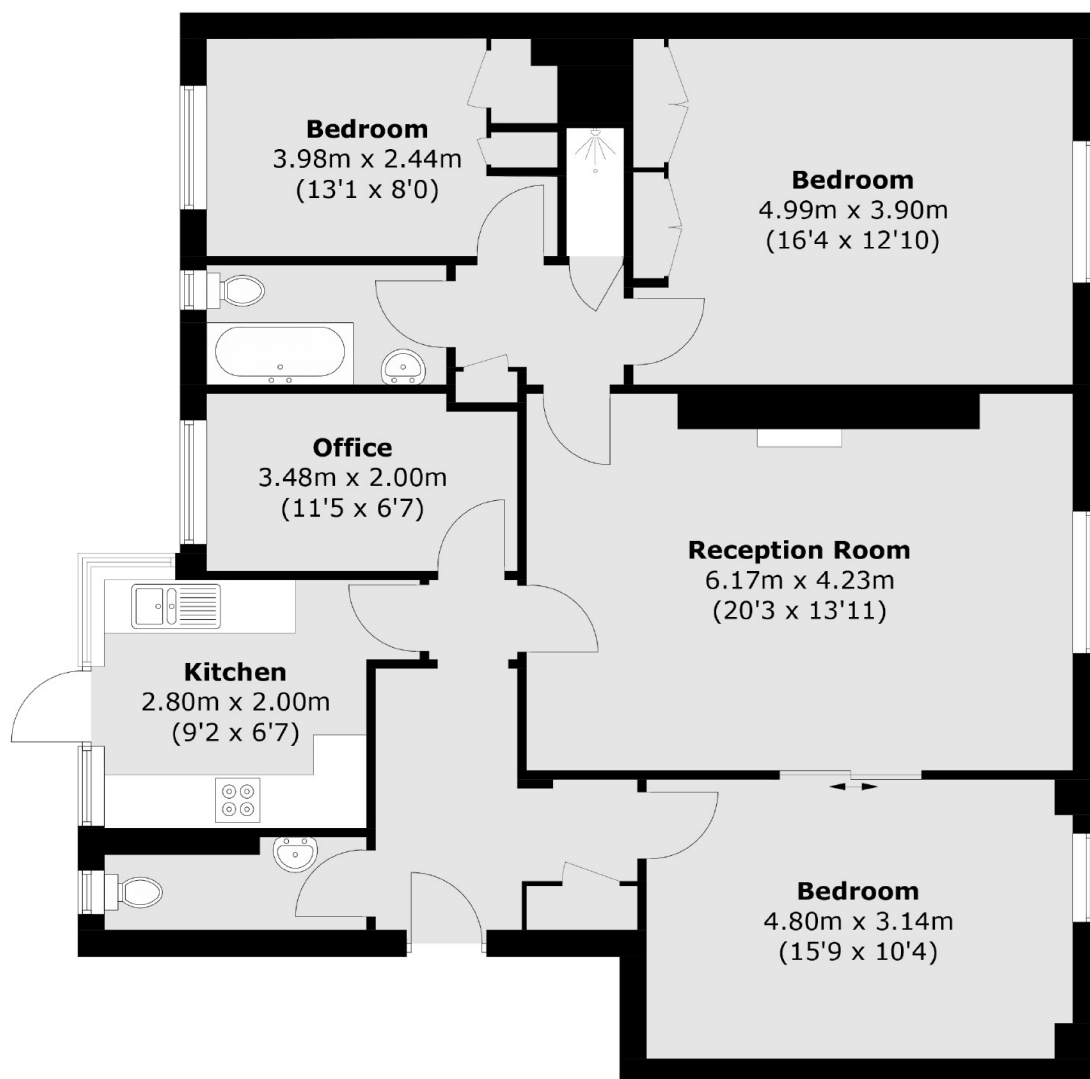
This iconic building has retained its history by keeping 1920's touches and styling within the building which can be seen in the concierge reception, characterful lifts to all floors, opulent stairway and apartment doors.

Features

- Prime Marylebone Location
- Three Bedrooms
- Large Reception Room
- Seventh Floor
- Two Passenger Lifts
- Concierge



Portland Place, London, W1B



Total area (approx.): 110.0 sq. m (1184.5 sq. ft)