



Molyneux Street, W1H

£1,150 Per week

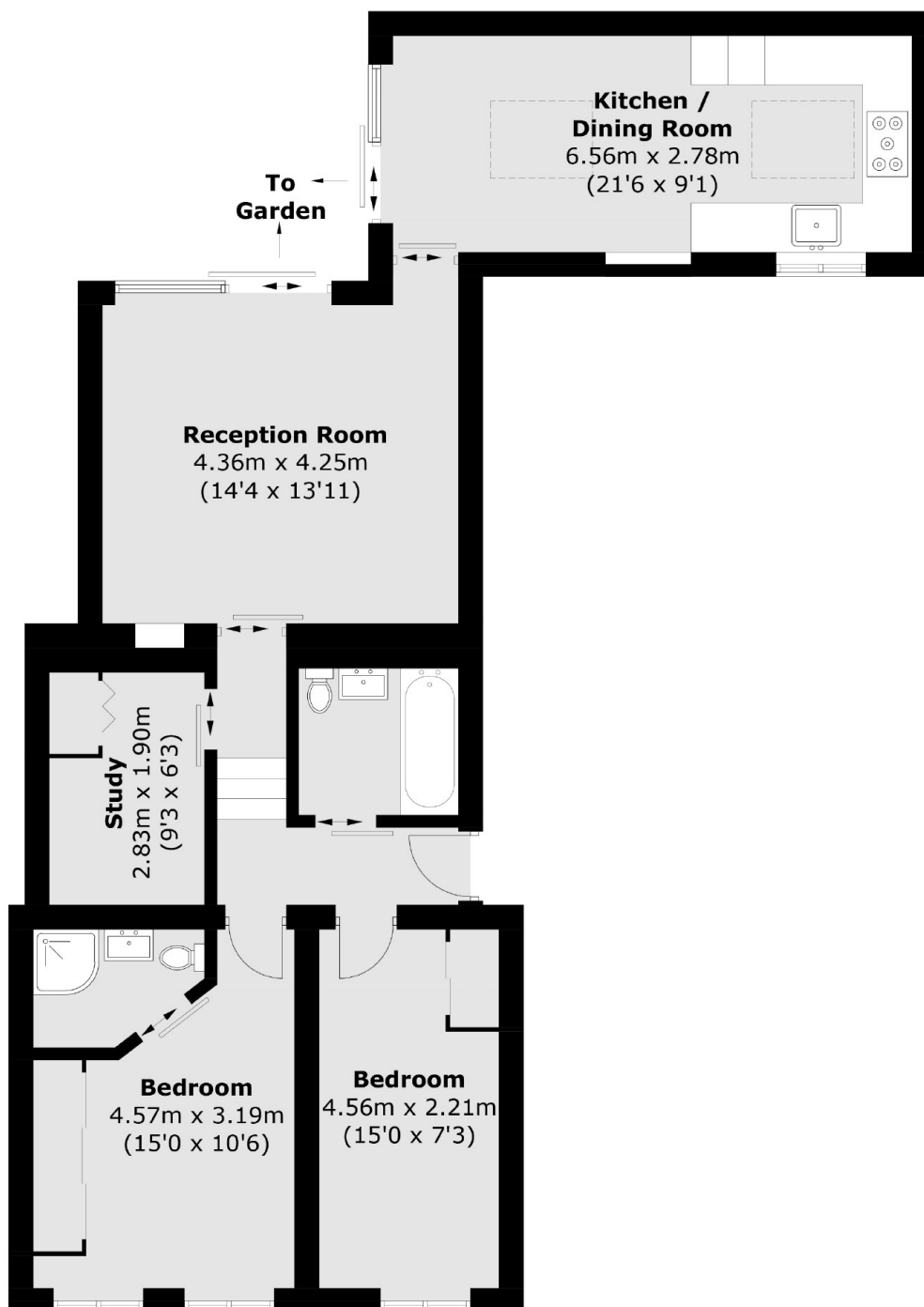
A beautifully presented two/three bedroom apartment on the ground floor of this attractive purpose built block on Molyneux Street. The flat has a large reception with wood flooring and sliding doors leading onto a private garden. There is a separate modern kitchen/dining room, two double bedrooms, a third bedroom currently being used as a study, and two bathrooms.

Molyneux Street is a short walk from Marble Arch, Edgware Road and Baker Street Underground stations. Portman Village close by, offering an array of independent boutiques, cafes and restaurants, and both Hyde Park and Regent's Park are within easy reach.

Features

Two/Three Bedrooms
Two Bathrooms
Kitchen/Dining Room
Separate Reception
Private Garden

Molyneux Street, London, W1H



Total area (approx.): 79.2 sq. m (852.5 sq. ft)