



Manchester Street, W1U

£650 Per week

A good sized one bedroom apartment on the lower ground floor of this Georgian townhouse in the heart of Marylebone, with a private courtyard. The flat has an open-plan kitchen/reception, one double bedroom and bathroom.

Manchester Street is in the heart of Marylebone Village and only a short walk from the vibrant shops, bars, cafes and restaurants of Marylebone High Street. Bond Street, Baker Street and Oxford Circus stations are all close by.

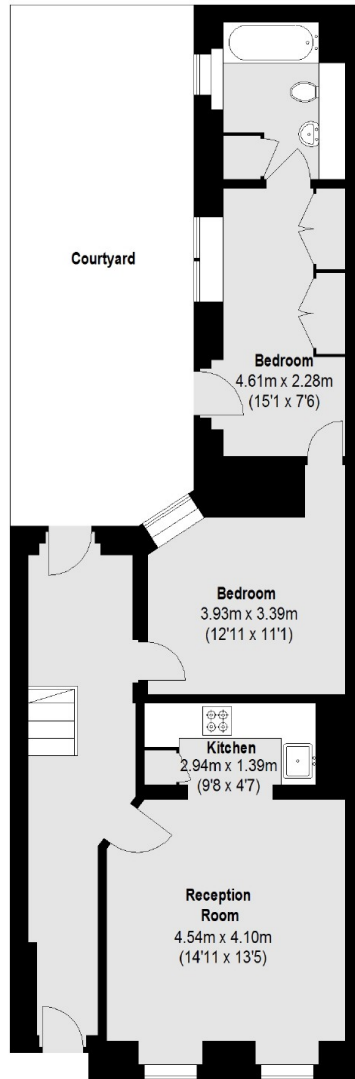
Features

- Marylebone Village
- One Bedroom
- One Bathroom
- Kitchen/Reception
- Unfurnished
- The Portman Estate

Manchester Street, London, W1U



Ground Floor



Lower Ground Floor

Total area (approx.): 69.37 sq. m (746 Sq. ft)