



## Montagu Square, W1H

£1,175 Per week

**Dexters**



## Montagu Square, W1H

A beautifully presented apartment on the second floor of this elegant Georgian townhouse on Montagu Square.

The flat has a large reception with wood flooring, a separate stylish kitchen with built-in appliances, two double bedrooms, bathroom and a guest WC.

Montagu Square is considered one of London's most desirable Garden Squares, offering resident only gardens in the heart of central London. Both Hyde Park and Regent's Park are within easy reach, and the vibrant shops, bars, cafes and restaurants of Marylebone High Street are close by.

There are fantastic transport connections, including Marylebone, Marble Arch, Bond Street and Baker Street stations, which are all within a mile away.

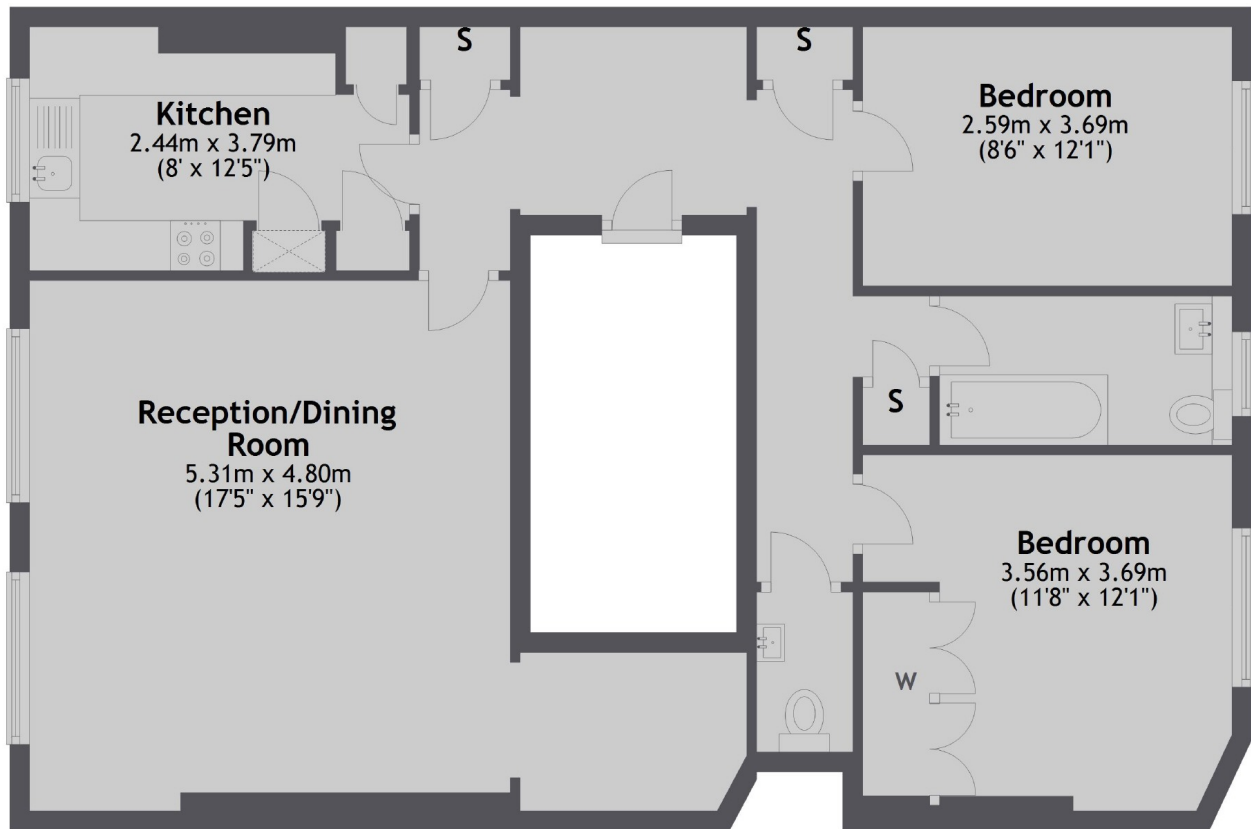
### Features

- Garden Square
- Second Floor
- Large Reception
- Separate Kitchen
- Two Bedrooms
- Bathroom & Guest WC





# Montagu Square, London, W1H



Total area: approx. 82.5 sq. metres (887.9 sq. feet)