



Paddington Street, W1U

£750 Per week

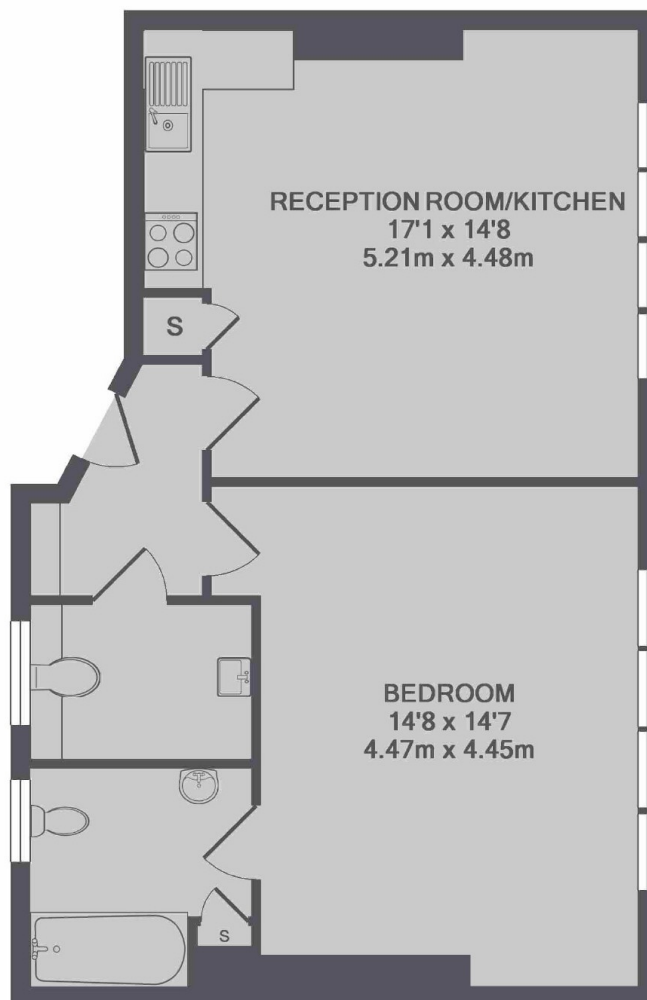
A large one bedroom first floor apartment with high ceilings and wood flooring throughout. There is an open-plan kitchen/reception room. The bathroom is en suite and there is an additional guest WC.

The bars, cafes and restaurants of Marylebone High Street are virtually on your doorstep and Paddington Street gardens are only moments away. Regent's Park is a short walk from the property. Baker Street, Marylebone, Oxford Circus, Bond Street and Great Portland Street stations provide numerous transport links.

Features

Marylebone Village
Kitchen/Reception
One Bedroom
One Bathroom
Guest WC

Paddington Street, London, W1U



TOTAL APPROX. FLOOR AREA 624 SQ.FT. (58.0 SQ.M.)

Dexters

Marylebone
53-55 Weymouth Street
London
W1G 8NJ
Lettings
0207 224 5545

Energy Rating: C. We aim to make our particulars both accurate and reliable. However they are not guaranteed; nor do they form part of an offer or contract. If you require clarification on any points then please contact us, especially if you're traveling some distance to view. Please note that appliances and heating systems have not been tested and therefore no warranties can be given as to their good working order.

 **RICS** | Regulated
Estate Agent
and Letting Agent

dexters.co.uk