



Seymour Street, W1H

£473 Per week

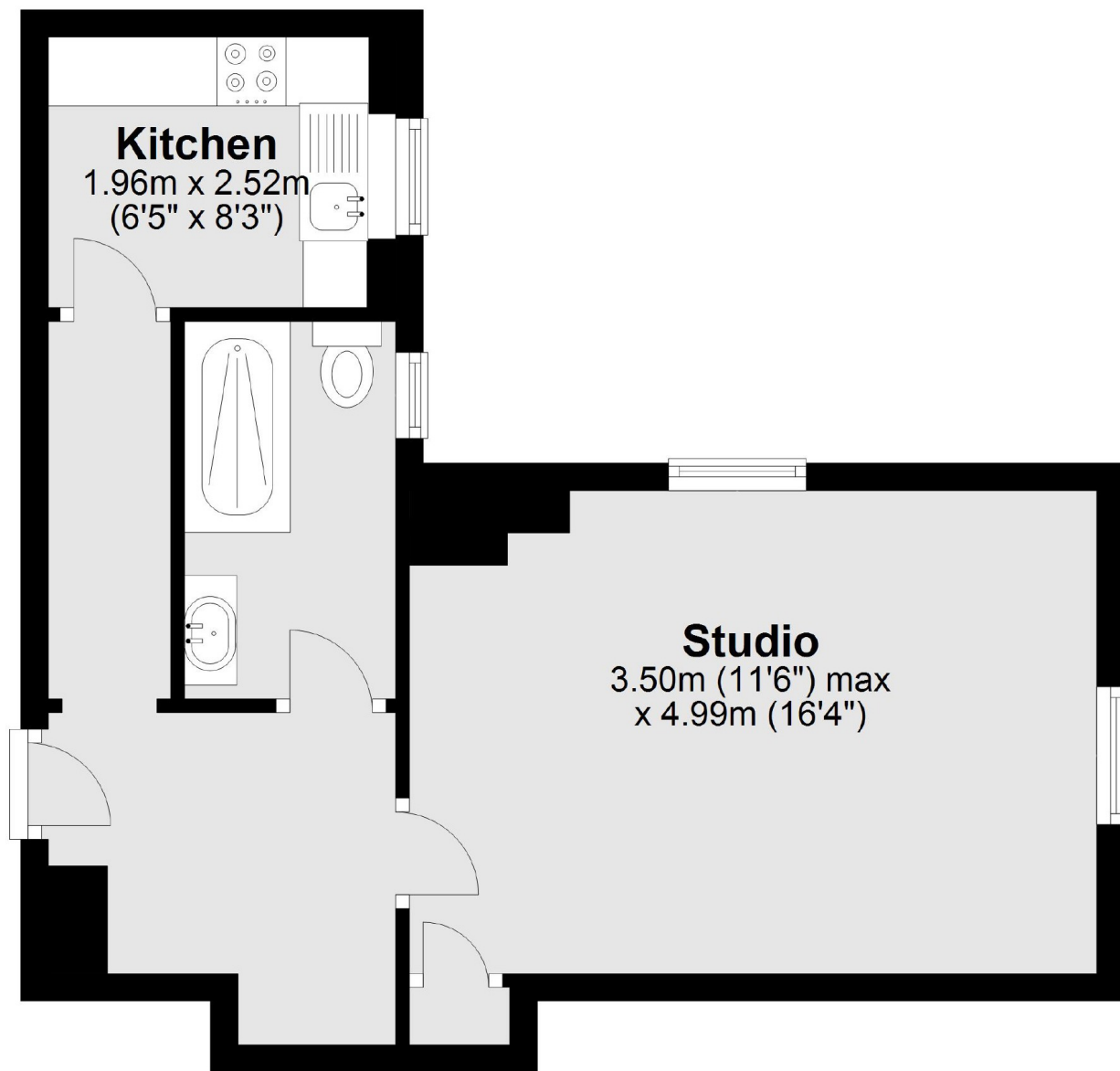
A studio Apartment situated in a portered block on Seymour Street. The flat is on the second floor and has a studio/reception, separate kitchen and shower room.

Seymour Street sits on the edge of Portman Village which is a favourite for locals, providing a village vibe in the heart of central London. The vibrant shops, bars and restaurants of Marylebone High Street are also within easy reach.

Features

- Portered Building
- Studio Apartment
- Second Floor
- Separate Kitchen
- Shower Room

Seymour Street, London, W1H



Total area: approx. 365.00 sq. metres (3877.22 sq. feet)