

Seymour Street, W1H

£625 Per week

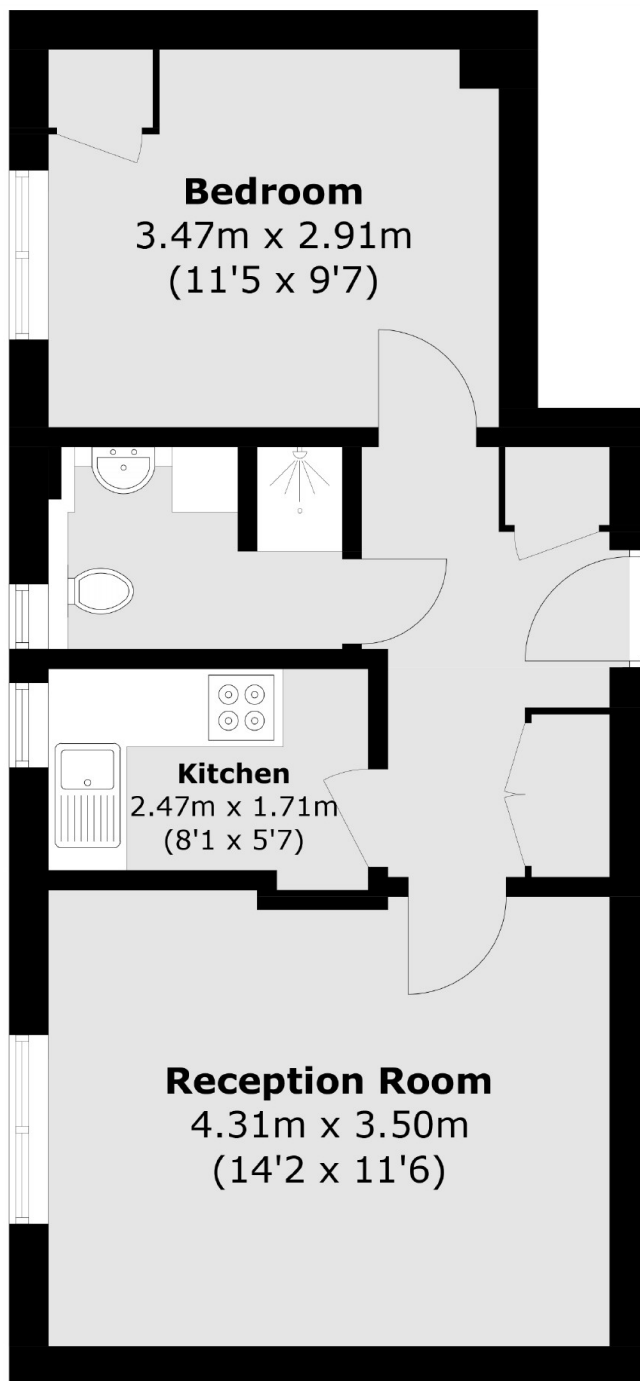
A well-presented one bedroom apartment forming part of this portered building on Seymour Street. The flat has a reception room, separate kitchen, double bedroom with built-in wardrobes and a bathroom. The property has wood flooring throughout.

Seymour Street sits on the edge of Portman Village which is a favourite for locals, providing a village vibe in the heart of central London. The vibrant shops, bars and restaurants of Marylebone High Street are also within easy reach.

Features

- Portered Building
- One Bedroom
- One Bathroom
- Reception Room
- Separate Kitchen

Seymour Street, London, W1H



Total area (approx.): 39.8 sq. m (428.5 sq. ft)