



## George Street, W1H

£2,845 Per week

On the seventh floor, with a lift, is this newly refurbished four bedroom lateral apartment.

The nearest stations can be found at Marble Arch, Edgware Road, Baker Street and Marylebone stations.

### Features

- Portered Building
- Seventh Floor, With Lift
- Four Bedrooms
- Three Bathrooms
- Guest WC
- Kitchen & Separate Utility
- Two Receptions



## George Street, W1H

The flat has plenty of entertaining space with a large reception providing enough room for an office/study area, a separate dining room and modern kitchen.

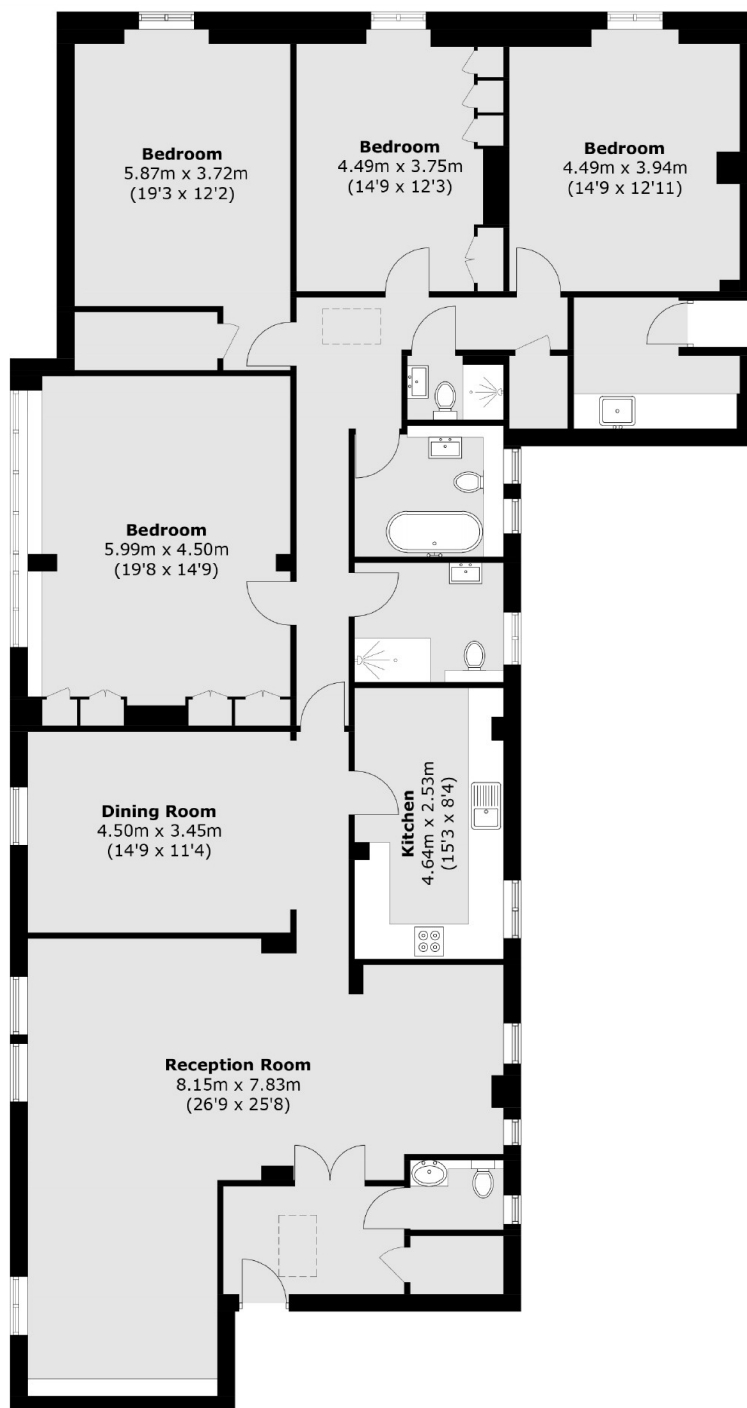
All four bedrooms are double rooms with built-in storage and there are two shower rooms, a bathroom, separate guest WC and a further utility room.

An array of fashionable boutique shops and restaurants can be found locally within Portman Village and Marylebone village and the open spaces of Hyde Park are a short walk away.





# George Street, London, W1H



Total area (approx.): 205.6 sq. m (2,213.1 sq. ft)