



Seymour Place, W1H

£895 Per week

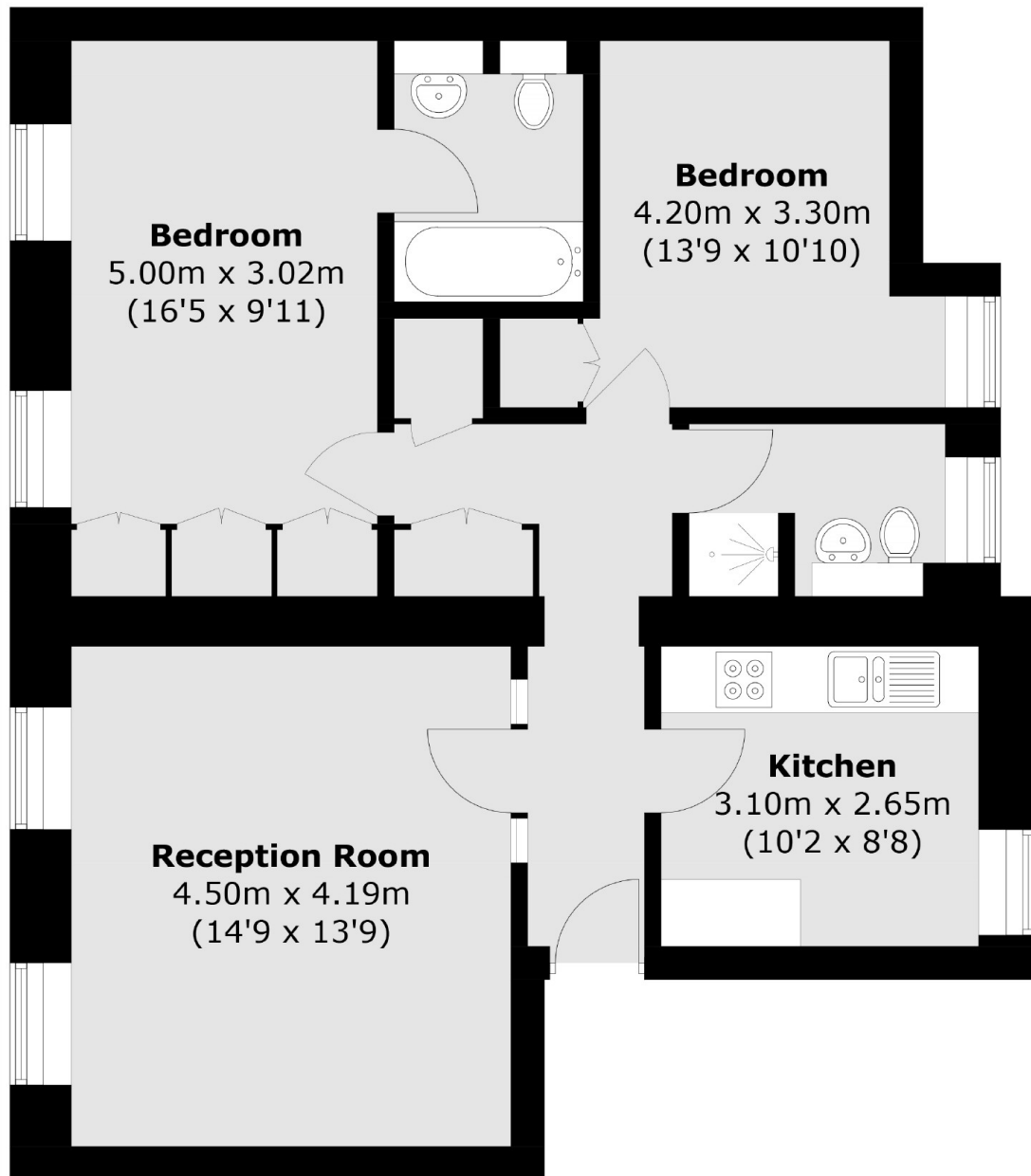
A two bedroom apartment on the first floor of this attractive period building on Seymour Place. The property has two bedrooms with built-in storage, a reception room with wood flooring, separate kitchen and two bathrooms (one shower room).

Seymour Place is a short walk from the boutique shops, bars and restaurants of both Portman Village and Marylebone High Street, both a favourite with locals, providing a village vibe in the heart of central London.

Features

- First Floor Flat
- Two Bedrooms
- Two Bathrooms
- Separate Kitchen
- Unfurnished
- The Portman Estate

Seymour Place, London, W1H



First Floor

Total area (approx.): 72.6 sq. m (781.4 sq. ft)