



Gloucester Place, W1U

£650 Per week

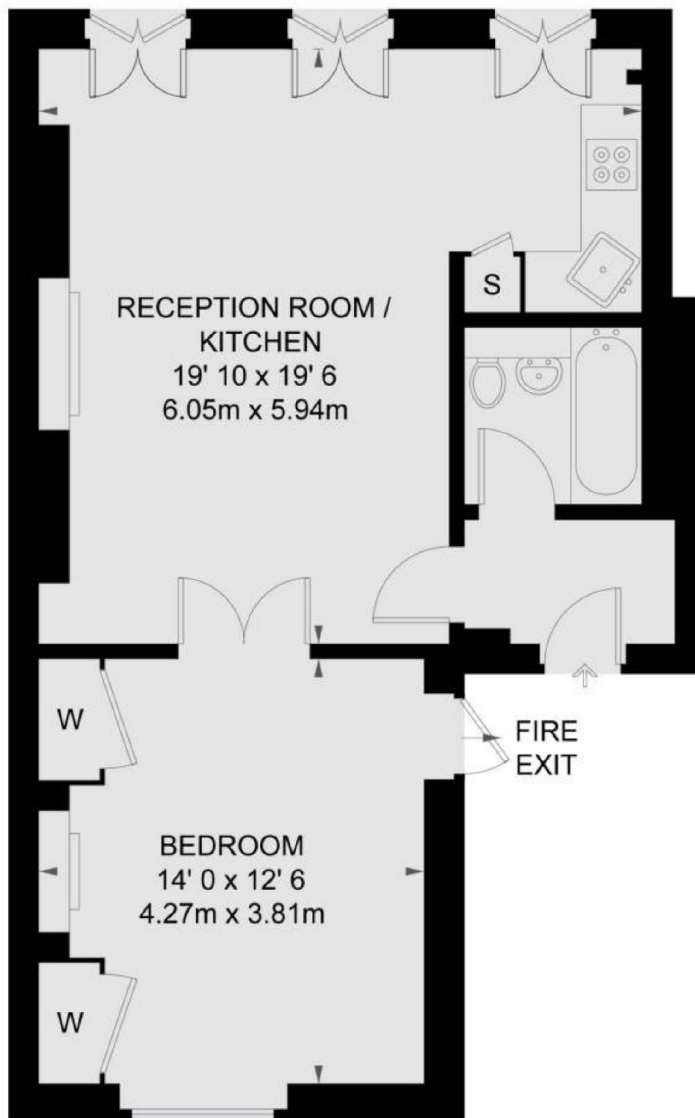
A well-presented one bedroom apartment on the first floor of this period conversion in Marylebone. There is an open-plan kitchen/reception room, double bedroom and bathroom. Unfurnished.

Gloucester Place is a short walk from the vibrant shops, bars, cafes and restaurants of both Marylebone and Portman Villages. The open spaces of Regent's Park and Hyde Park are within easy reach and there are transport links from Marble Arch, Baker Street, Edgware Road and Bond Street stations.

Features

- First Floor Apartment
- Kitchen/Reception
- One Bedroom
- Bathroom
- Unfurnished
- The Portman Estate

Gloucester Place, London, W1U



FIRST FLOOR

TOTAL APPROX. FLOOR AREA 603 SQ. FT. (56 SQ. M.)
TOTAL APPROX. BALCONY AREA 62 SQ. FT. (5.8 SQ. M.)