



## Seymour Street, W1H

£625 Per week

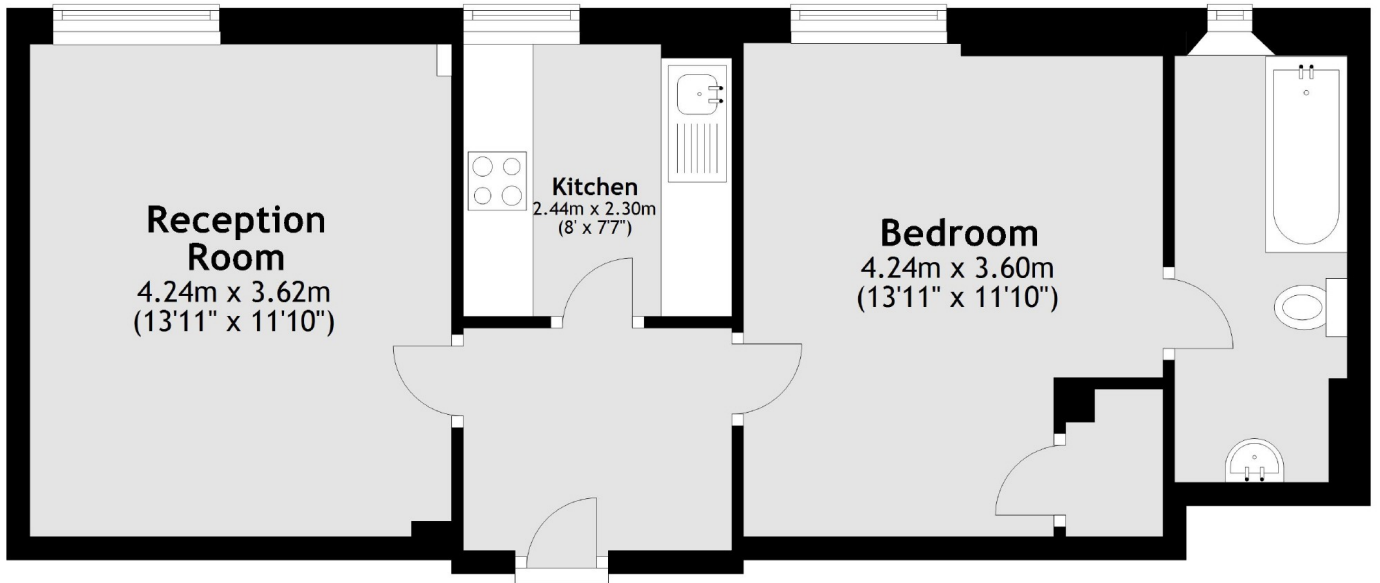
This one bedroom apartment is situated in a portered block on Seymour Street. The flat has a reception room, separate kitchen, double bedroom and bathroom.

Seymour Street sits on the edge of Portman Village which is a favourite for locals, providing a village vibe in the heart of central London. The vibrant shops, bars and restaurants of Marylebone High Street are also within easy reach.

### Features

- Portered Building
- One Bedroom
- One Bathroom
- Reception Room
- Separate Kitchen

# Seymour Street, London, W1H



Total area: approx. 48.5 sq. metres (521.6 sq. feet)