



## Welbeck Street, W1G

£2,500,000

A top floor apartment with three double bedrooms and a private roof terrace located moments from Bond Street Station and Marylebone High Street.

Located in the heart of Marylebone village on Welbeck Street. The property is close to the boutique shops, bars and restaurants of Marylebone High Street and the open spaces of Regent's Park.

### Features

- Three Double Bedrooms
- Two Bathrooms
- Dual Aspect Reception Room
- Roof Terrace
- Lease 999 from 1917
- Chain Free

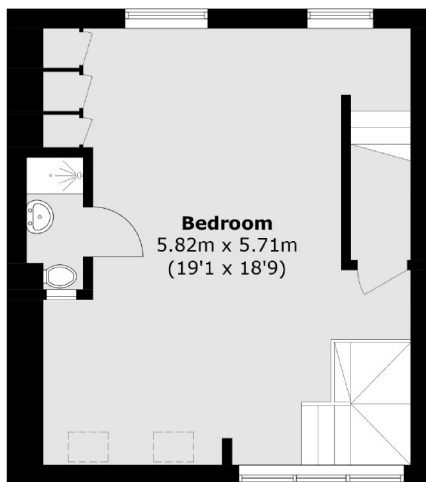


## Welbeck Street, W1G

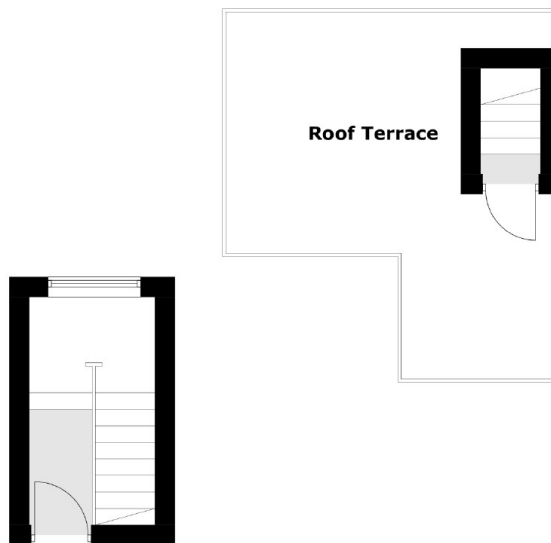
The property is arranged over three floors. The combined dining and reception room has a bright dual aspect and built in storage. Folding doors open to the kitchen. Additionally there is a guest cloakroom. The next floor has two double bedrooms and a bathroom. A lobby area has a concealed laundry area and a stairs case leading to the upper floor. This level has a large main bedroom and en suite. There is a staircase to the roof terrace which sits above the property.



# Welbeck Street, London, W1G

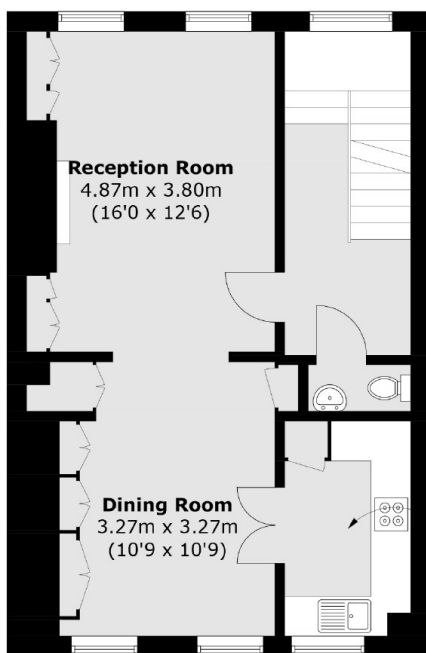


**Third Floor**

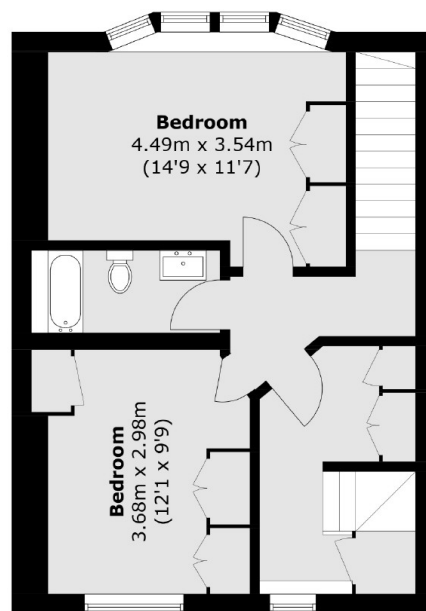


**Fourth Floor**

**Ground Floor**



**First Floor**



**Second Floor**

Total area (approx.): 142.8 sq. m (1,537.1 sq. ft)  
Roof Terrace area (approx.): 19.5 sq. m (209.9 sq. ft)