



Manchester Street, W1U

£690 Per week

This one bedroom apartment is on the second floor of a Georgian conversion in the heart of Marylebone Village, with an open-plan kitchen/reception room, shower room and double bedroom.

Manchester Street is in the heart of Marylebone Village and only a short walk from the vibrant shops, bars, cafes and restaurants of Marylebone High Street. Bond Street, Baker Street and Oxford Circus stations are all close by.

Features

- Second Floor
- Georgian Conversion
- One Bedroom
- Shower Room
- Unfurnished
- The Portman Estate

Manchester Street, London, W1U

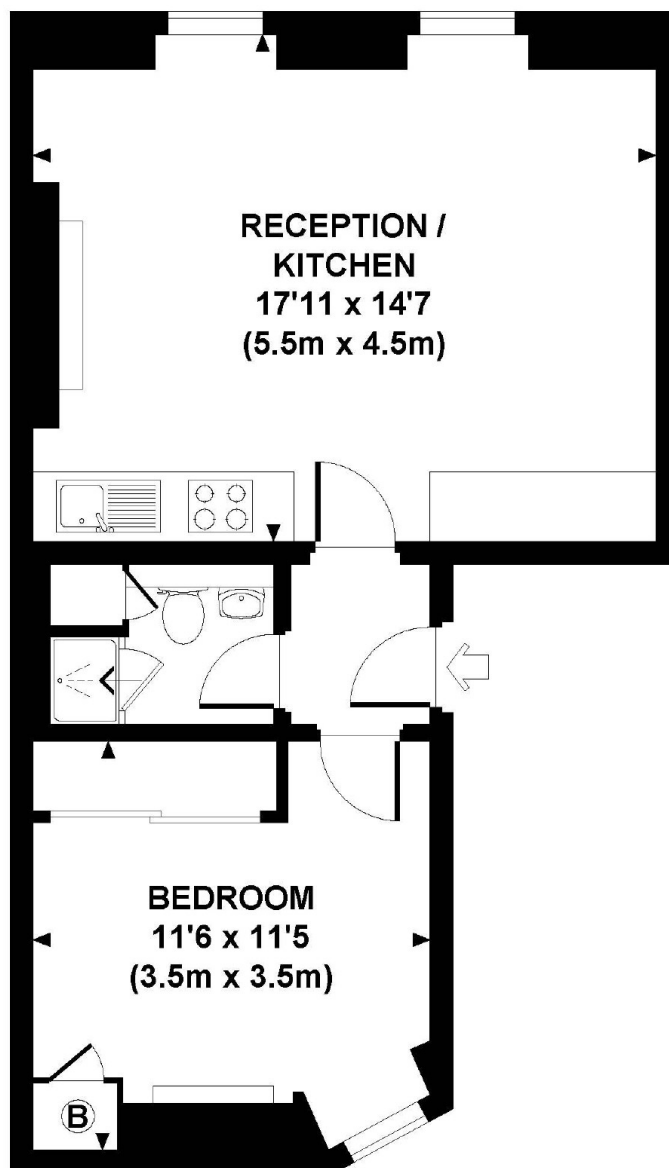
MANCHESTER STREET, W1U

Approx. gross internal area

459 Sq Ft. / 42.6 Sq M.

Representation of current layout.

Not to scale.



SECOND FLOOR