



Devonshire Place, W1G

£1,875,000

Dexters



Devonshire Place, W1G

A bright top floor apartment with direct lift access in a period building. Two double bedrooms, two bathrooms and a stunning reception room with a vaulted ceiling.

The property comprises of a principal bedroom with an en-suite bathroom, second double bedroom and a shower room. The reception room has a vaulted ceiling and provides entertaining and dining space and is open to the kitchen. The apartment benefits from direct lift access into the apartment.

The residential apartment has an optional medical licence for one practitioner and a long lease. The building has undergone a full renovation staying true to its Georgian charm.

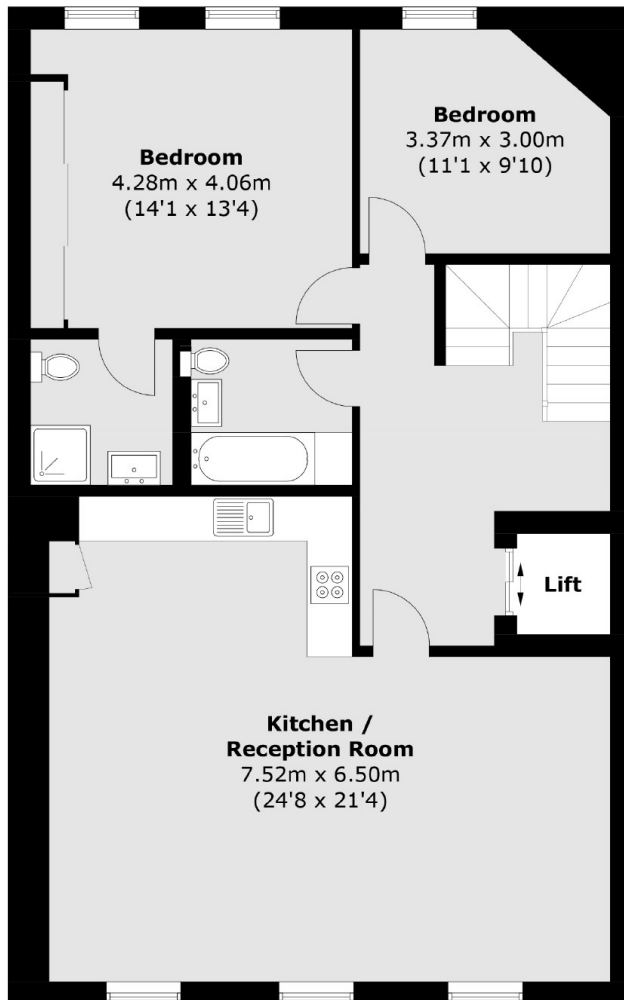
Devonshire Place is in close proximity to Marylebone High Street and Regent's Park. Local transport links include Baker Street Underground Station (Bakerloo, Jubilee, Metropolitan, Circle and Hammersmith & City lines) as well as Regent's Park Station and Warren Street Station.

Features

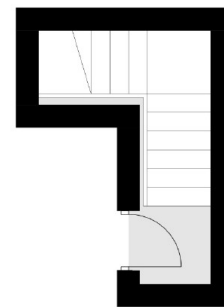
- Reception With Vaulted Ceiling
- Two Double Bedrooms
- Main Bedroom En Suite
- Video Entryphone
- Direct Lift Access
- Long Lease To 2168



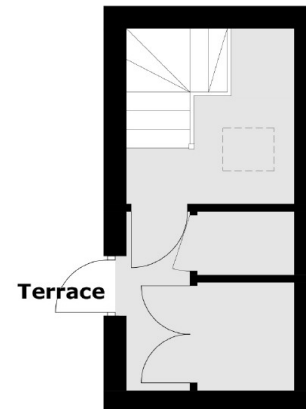
Devonshire Place, London, W1G



Third Floor



Second Floor



Fourth Floor

Total area (approx.): 111.4 sq. m (1197.5 sq. ft)