



Devonshire Place, W1G

£2,150,000

Dexters



Devonshire Place, W1G

A bright top floor apartment with direct lift access in a period building. The residential apartment has an optional medical licence for one practitioner and a long lease.

The property comprises of a principal bedroom with a an en-suite bathroom, second double bedroom and a shower room. The reception room has a vaulted ceiling and provides entertaining and dining space and is open to the kitchen. The apartment benefits from direct lift access into the apartment.

The building has undergone a full renovation staying true to its Georgian charm with custom ironwork and new flooring.

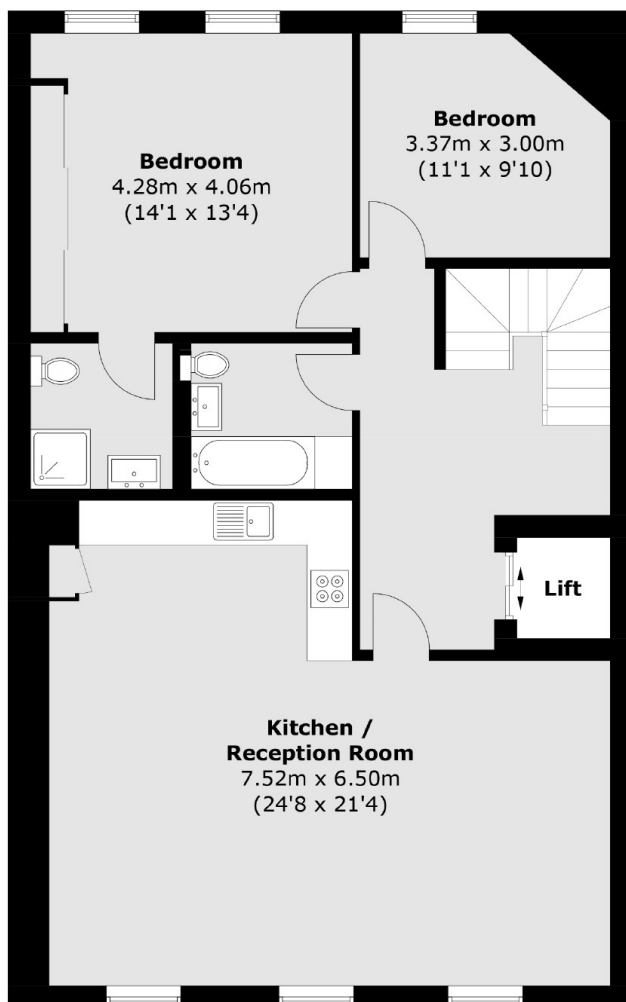
Devonshire Place is in close proximity to Marylebone High Street and Regent's Park. Local transport links include Baker Street Underground Station (Bakerloo, Jubilee, Metropolitan, Circle and Hammersmith & City lines) as well as Regents Park Station and Warren Street Station.

Features

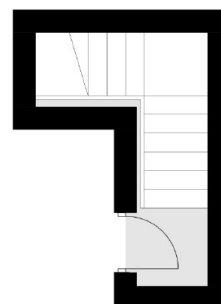
- Reception With Vaulted Ceiling
- Kitchen
- Two Double Bedrooms
- Main Bedroom En Suite
- Direct Lift Access
- Long Lease To 2168



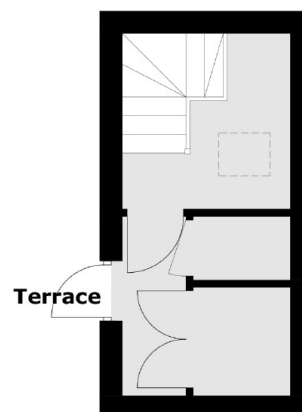
Devonshire Place, London, W1G



Third Floor



Second Floor



Fourth Floor

Total area (approx.): 111.4 sq. m (1197.5 sq. ft)