



Glentworth Street, NW1

£1,700,000

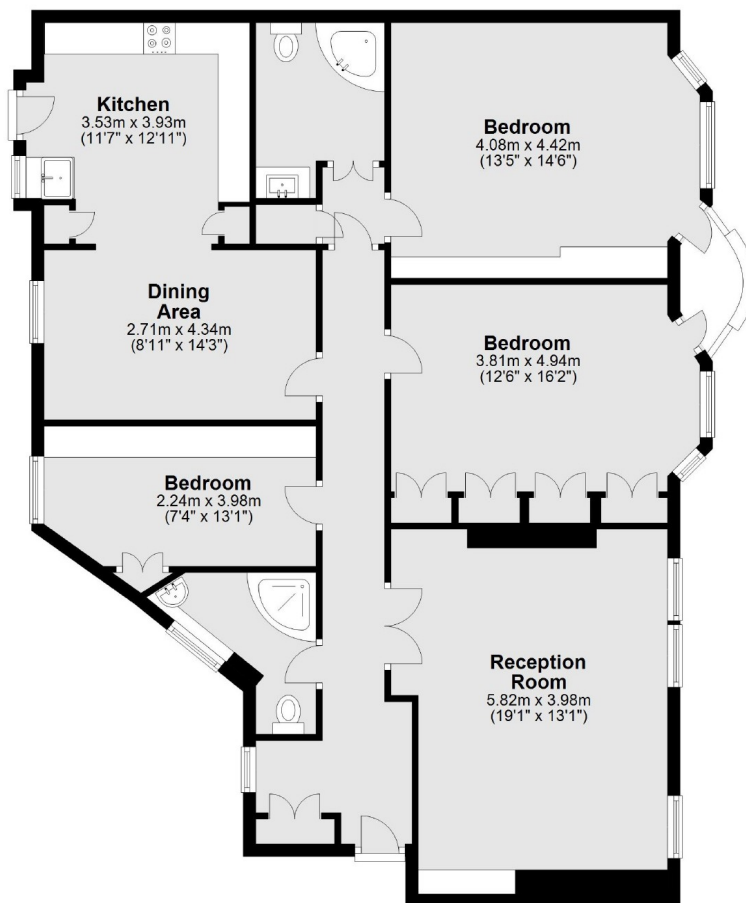
A three bedroom apartment in a Victorian residential block located between Baker Street and Regents Park. The apartment has a long lease and a share of the Freehold.

Baker Street and Marylebone Stations are easily accessible. Marylebone High Street and the green spaces of Regents Park are a short walk away.

Features

- Three Bedrooms
- Reception
- Kitchen-Diner
- Two Bathrooms
- Share Of Freehold
- Day Porter

Glentworth Street, London, NW1



Total area: approx. 124.3 sq. metres (1337.5 sq. feet)