



Harley Street, W1G

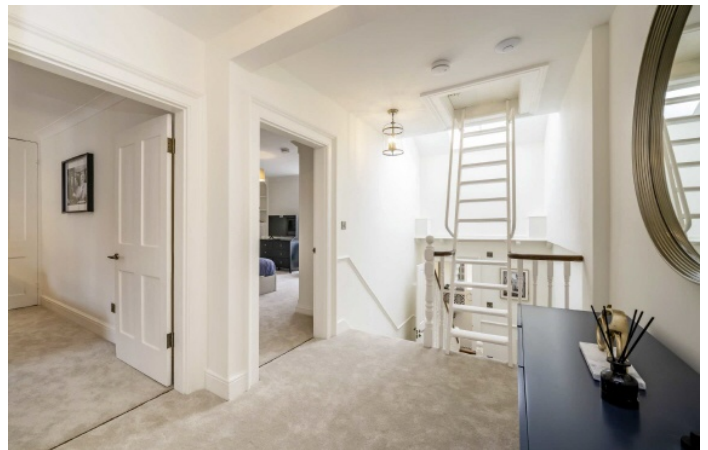
£1,950 Per week

This four bedroom apartment is arranged over the third and fourth floors of this period conversion in the heart of Marylebone Village.

Harley Street is one of the most famous of streets in the world renowned medical district. Mayfair, Bond Street and Fitzrovia are all close by along with excellent transport links, including Bond Street, Baker Street and Regent's Park underground stations to name just a few.

Features

Newly Refurbished
Duplex Apartment
Four Bedrooms
Bathroom & Guest WC
Kitchen & Reception
Fully Furnished

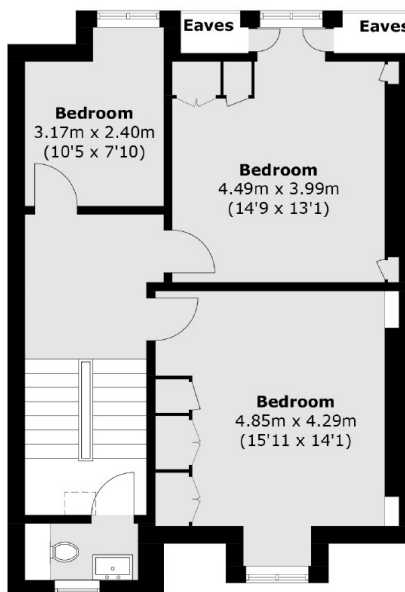


Harley Street, W1G

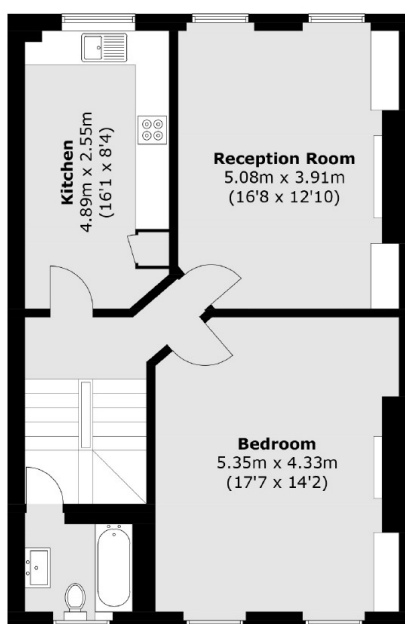
The property has been newly refurbished and has a good sized reception room, separate modern kitchen with built-in appliances, four bedrooms, bathroom, guest WC and has lots of light throughout.



Harley Street, London, W1G



Fourth Floor



Second Floor

Third Floor

Total area (approx.): 128.8 sq. m (1,386.3 sq. ft)
(Excluding Eaves)