



Montagu Mansions, W1U

£1,550 Per week

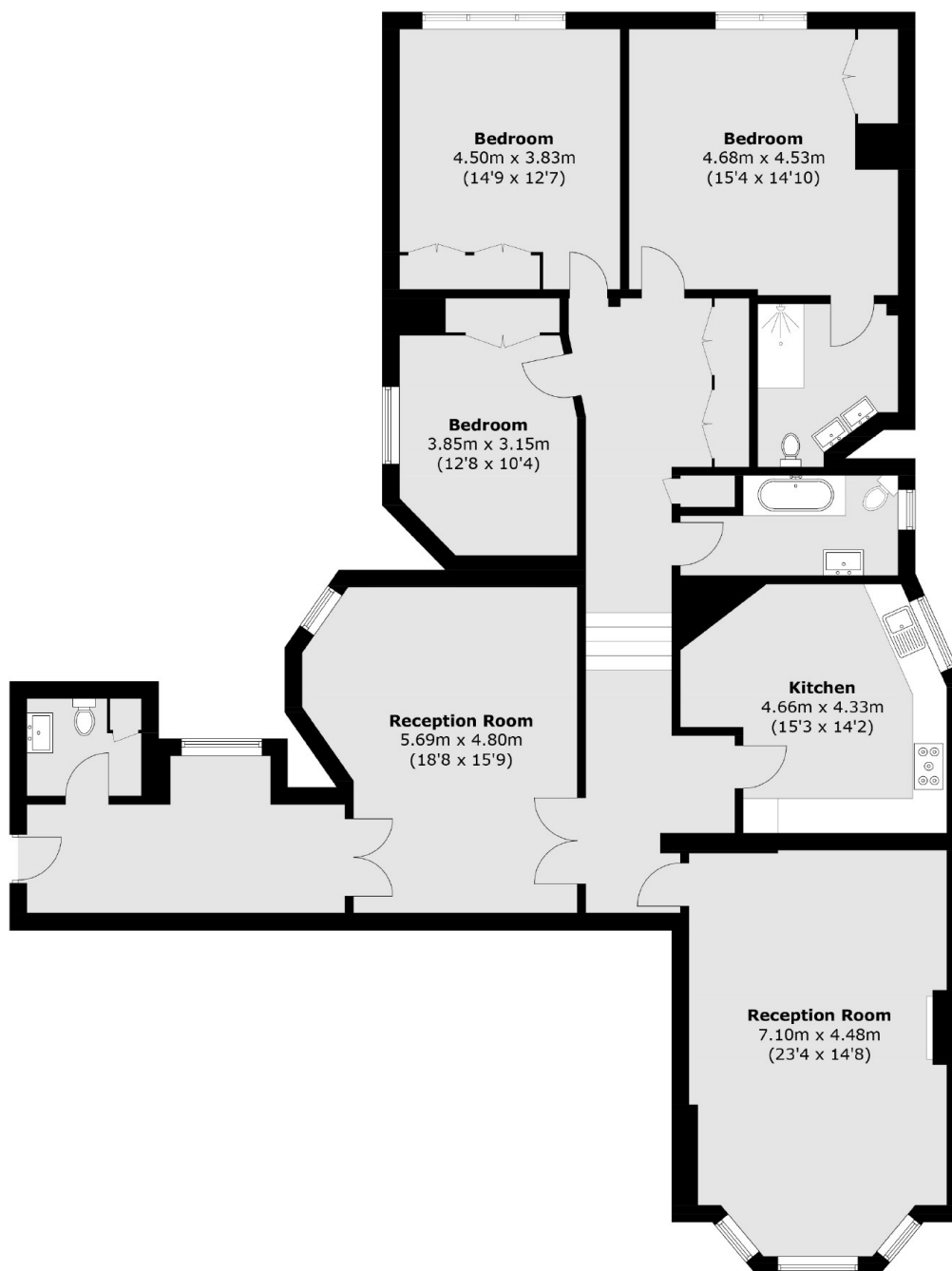
A lateral apartment with high ceilings forming part of this red brick mansion block close to Baker Street. The apartment has two good sized reception rooms, separate kitchen, three bedrooms, two bathrooms and a guest WC. Unfurnished.

Located on a residential street adjacent to Baker Street in Marylebone Village. Regent's Park and Hyde Park are both within half a mile. Nearby transport links include the mainline Marylebone station and both Baker Street and Bond Street tube stations.

Features

Lift And Porter
Two Receptions
Separate Kitchen
Three Bedrooms
Two Bathrooms
Guest WC
Unfurnished

Montagu Mansions, London, W1U



Total area (approx.): 184.5 sq. m (1,985.9 sq. ft)