



New Cavendish Street, W1G

£1,450,000

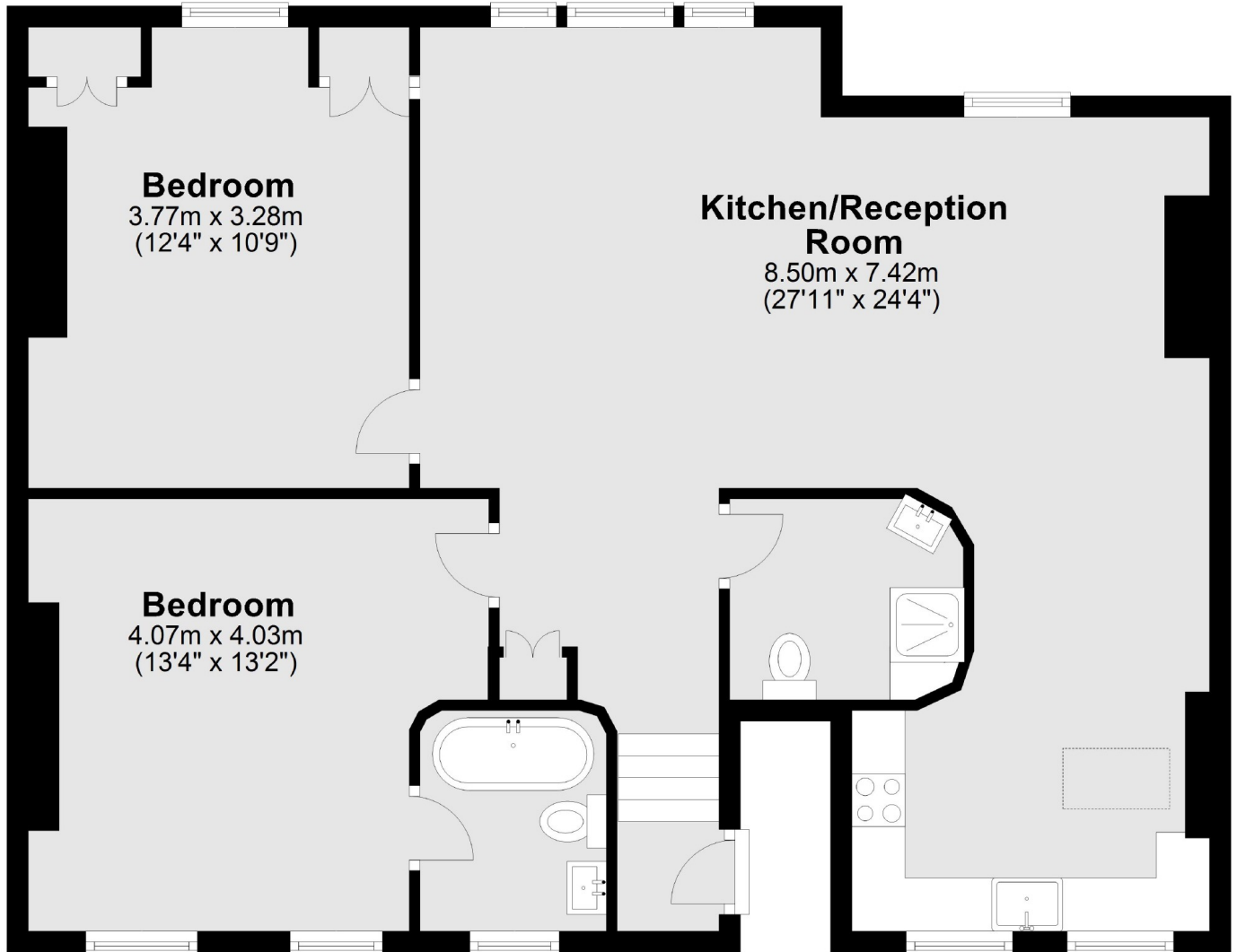
A two double bedroom apartment with two bathrooms located on the top floor of a period building. The bright property has an open plan kitchen living- dining space with a dual aspect over looking the roof tops.

Located off Marylebone High Street and moments from Bond Street Station where the Elizabeth Line runs to London Heathrow.

Features

- Two Double Bedrooms
- Main Bedroom En Suite
- Chain Free
- Marylebone Village Location
- Fourth Floor Walk Up
- Lease 105 years

New Cavendish Street, London, W1G



Total area: approx. 87.4 sq. metres (940.5 sq. feet)