



Devonshire Street, W1W

£650,000

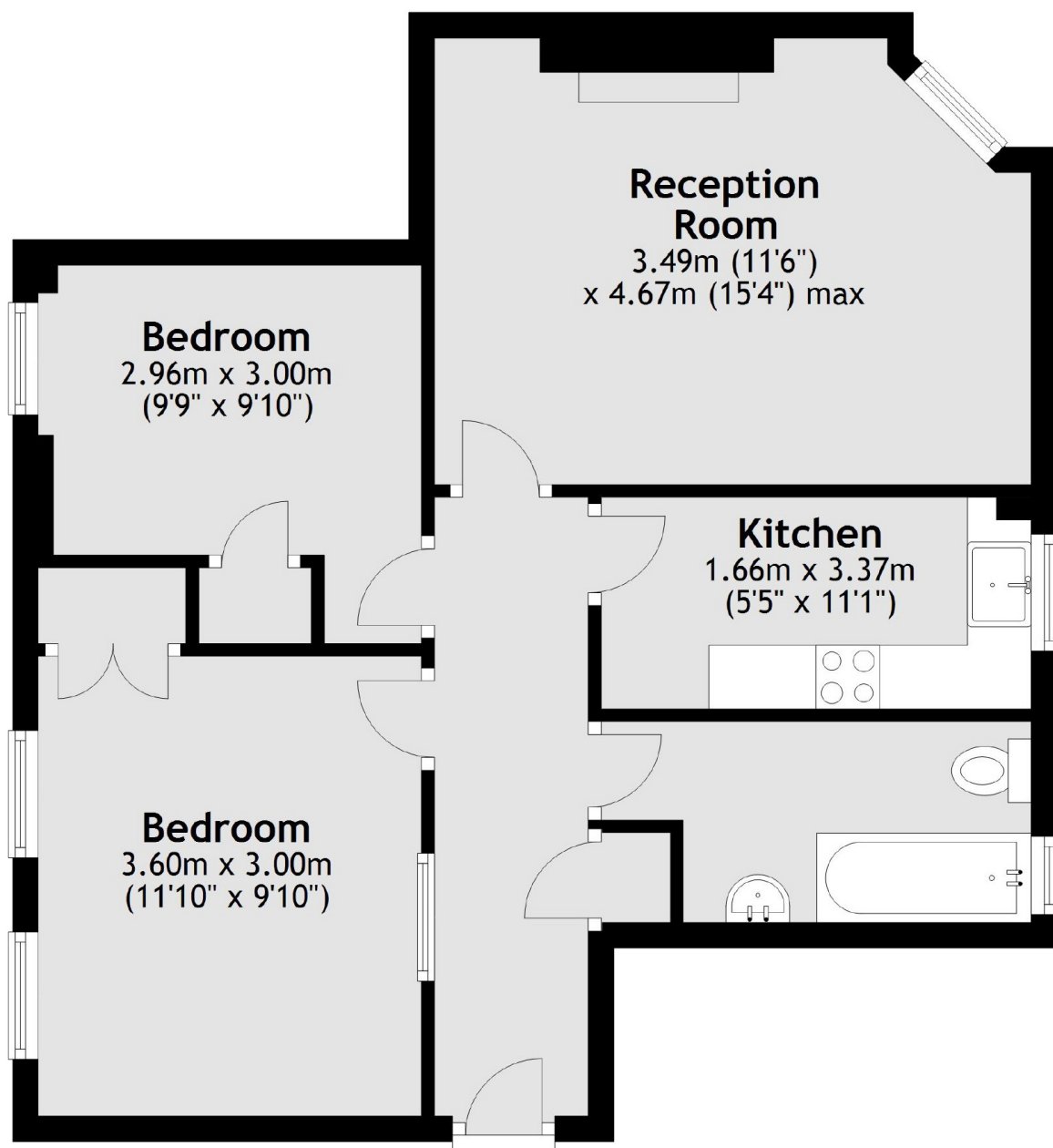
A two bedroom apartment located on the second floor of a period residential block with a lift and caretaker.

Located close to Marylebone High Street and Regents Park. Local transport links are located at Great Portland Street, Regents Park and Oxford Circus.

Features

- Two Bedrooms
- Reception
- Modern Kitchen
- Long Lease
- Lift
- Communal Heating & Hot Water

**Devonshire Street,
London, W1W**



Total area: approx. 54.0 sq. metres (581.5 sq. feet)