



Gloucester Place, NW1

£775,000

Guide price from £775,000. This lovely two double bedroom apartment is within a portered building on Gloucester Place. The flat is bright, in excellent condition having been refurbished and in a great central location moments from Regents Park and Marylebone High Street.

Radley House is adjacent to Regent's Park, with Oxford Street and the West End all within easy reach, Baker Street and Marylebone Stations are both within 200 metres.

Features

- Resident Porter And Lift
- Share Of Freehold
- Two Bedrooms
- Close To Regent's Park
- Excellent Condition
- Guide Price, From £775,000

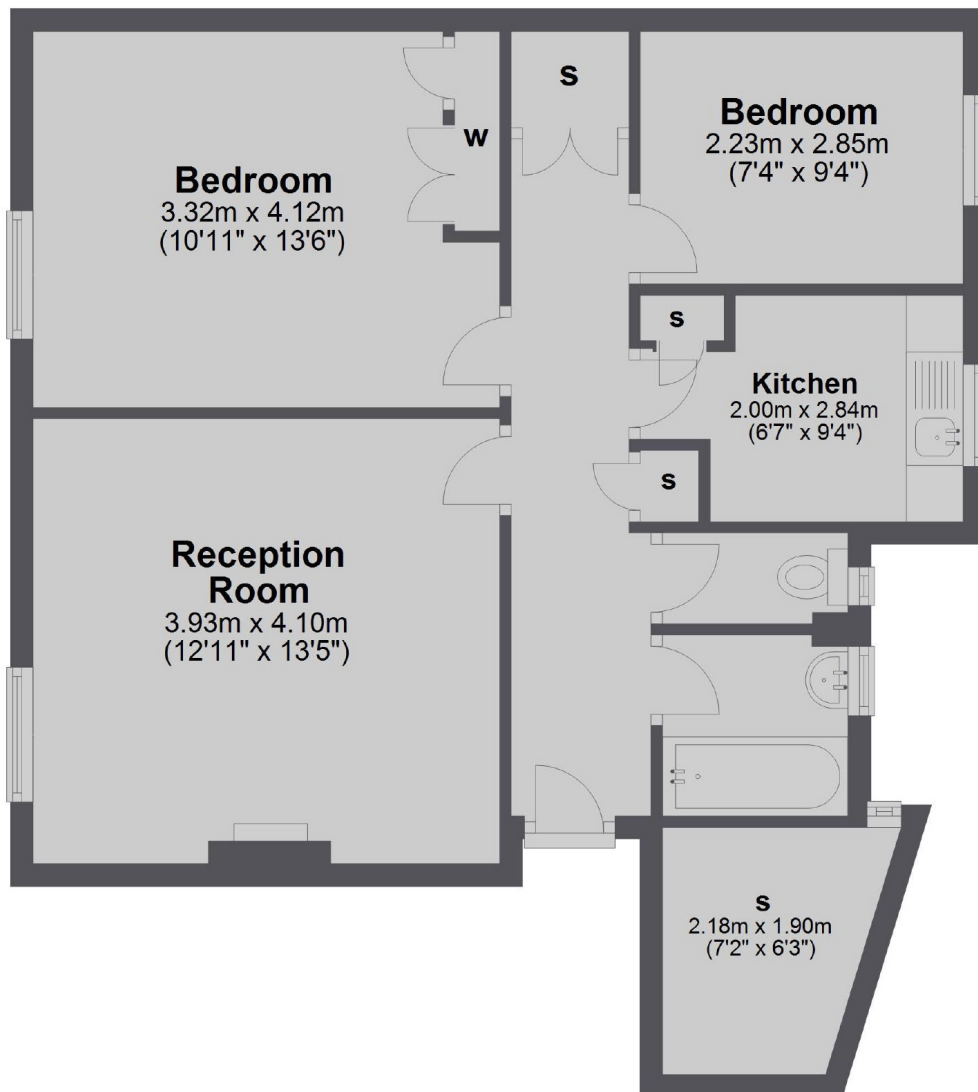


Gloucester Place, NW1

The property has been recently refurbished throughout by the present owner and offers comfortable, well planned living accommodation comprising a master bedroom with large built-in wardrobes, second bedroom, family bathroom and separate toilet, a bright reception room and modern fitted kitchen.



Gloucester Place, London, NW1



Total area: approx. 59.4 sq. metres (639.1 sq. feet)