



Baker Street, NW1

£1,975 Per week

A modern lateral apartment on the second floor of this substantial portered mansion block moments from Regent's Park and Baker Street.

Chiltern Court is a popular portered building close to Regent's Park and the shops, bars, cafes and restaurants of the West End. Baker Street, Marylebone and Regent's Park stations are all close by.

Features

- Second Floor Apartment
- Four Double Bedrooms
- Three Bathrooms & Guest WC
- Separate Kitchen
- Double Reception Room
- Wood Flooring Throughout
- Heating & Hot Water Included



Baker Street, NW1

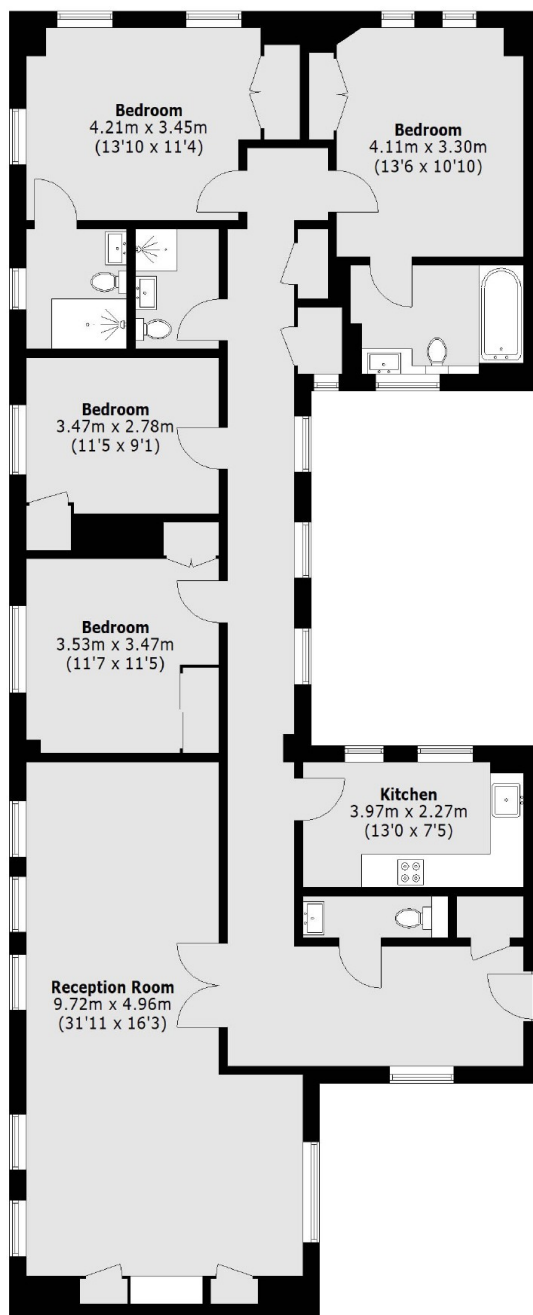
The flat has a large double reception room with both living and dining areas, featuring a wall-to-wall storage unit in an orange gloss and wood flooring. There is a separate kitchen with modern built-in appliances.

All four bedrooms are double rooms with built-in storage, two have en suites and there is a further shower room and guest WC off the hallway.

The property has high ceilings, ample storage, wood flooring throughout and is being offered on a furnished basis.



Baker Street, London, NW1



Second Floor

Total area (approx.): 156.8 sq. m (1,687.8 sq. ft)