



Torrington Place, WC1E

£1,425,000

Dexters



Torrington Place, WC1E

A three double bedroom apartment in a Victorian red brick mansion building overlooking a quiet mews. Moments from the amenities of Bloomsbury and Fitzrovia.

The beautifully presented apartment offers high ceilings throughout and consists of a spacious open reception room with two bay windows and a large casement window overlooking Chenies Mews, a sleek modern kitchen, principle bedroom with en suite shower room and built in storage, second double bedroom, third bedroom and bathroom.

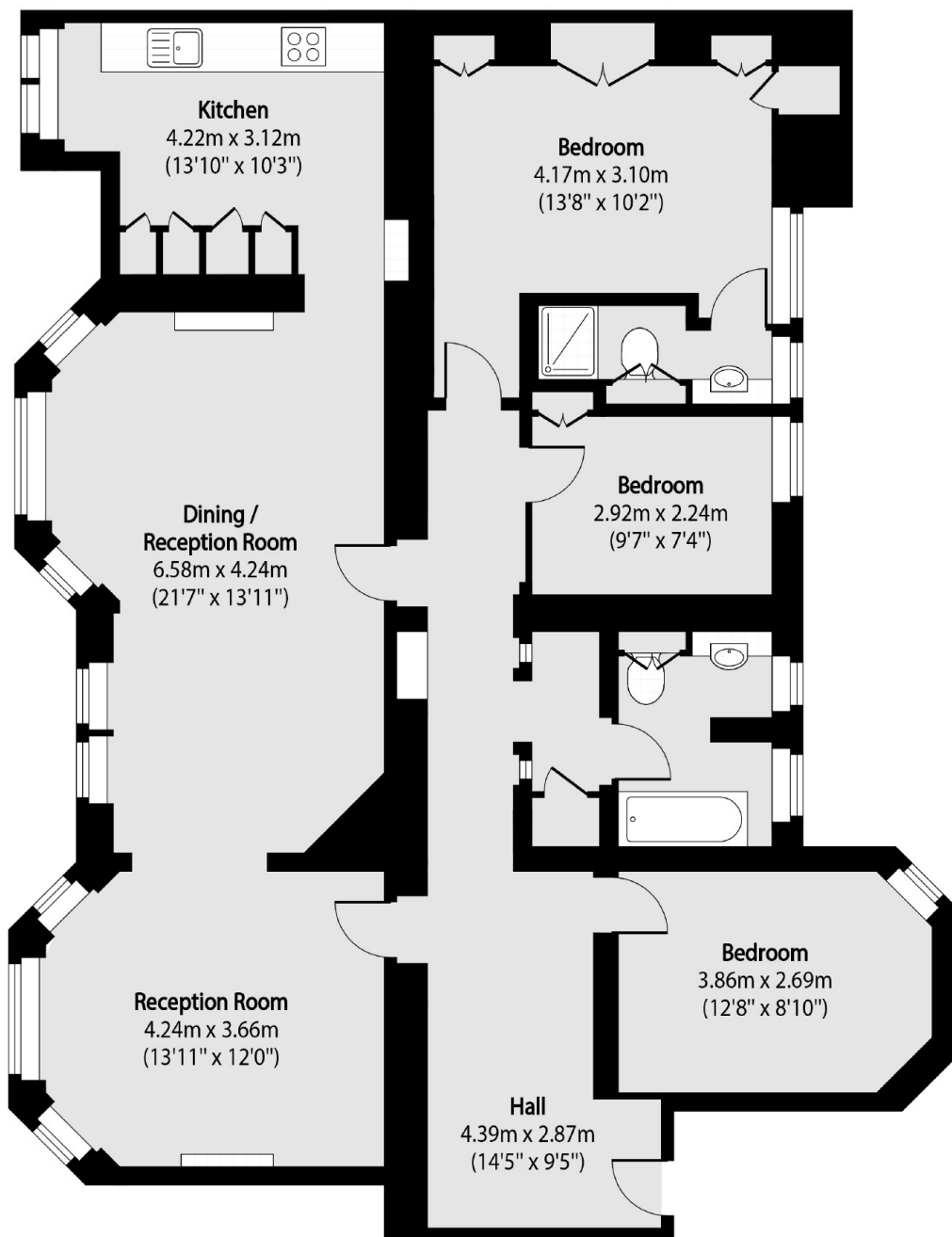
Local transports links are Tottenham Court Road, Goodge Street and Warren Street Stations. Euston and Kings Cross International are accessible.

Features

- Three Double Bedrooms
- Two Bathrooms
- Double Reception Room
- Kitchen
- Long Lease To 2161



Torrington Place, London, WC1E



Total area (approx): 127.18 sq m (1369 sq. ft)