



Portland Place, W1B

£995,000

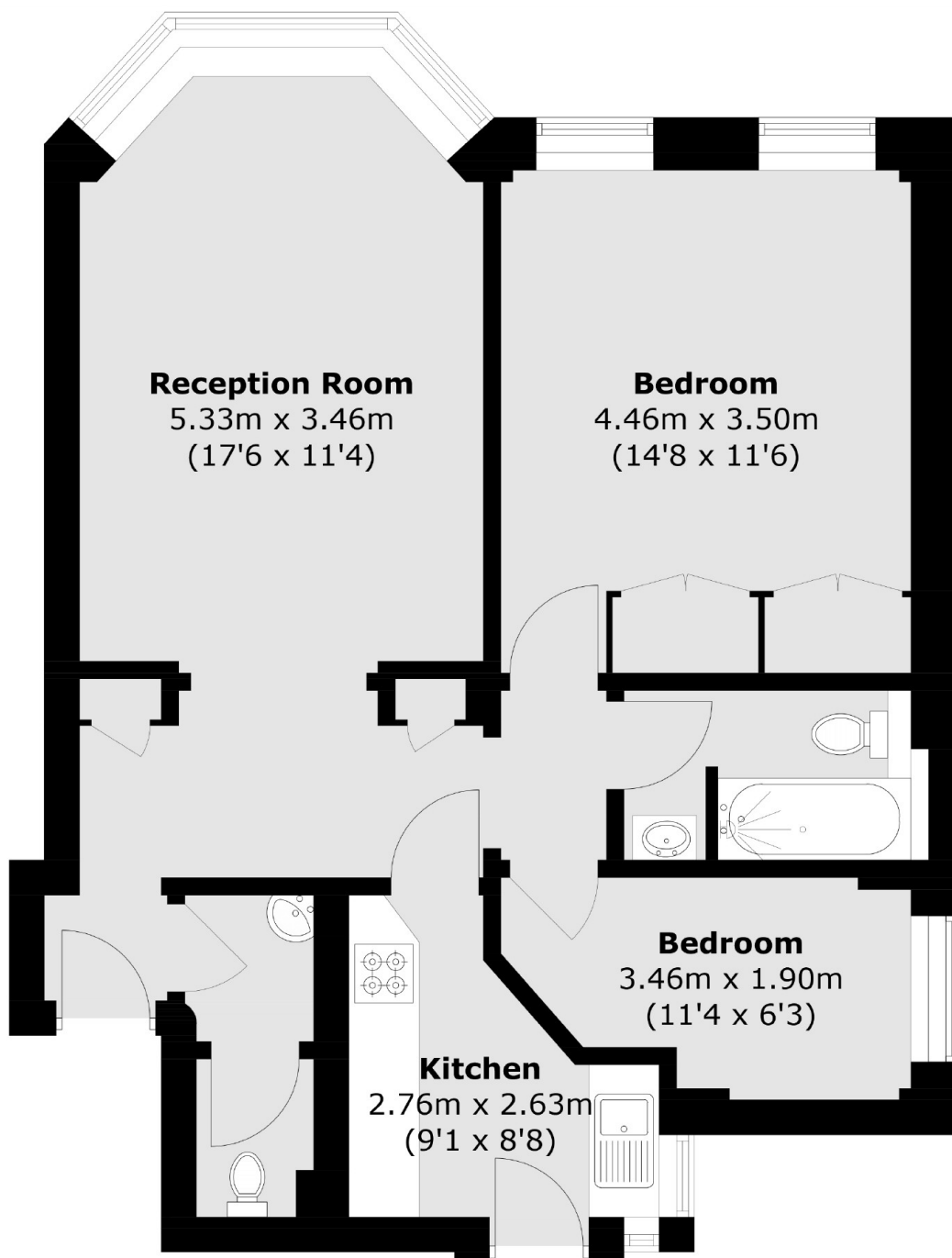
A two bedroom apartment on the eighth floor of this Portland Place building. Served by two lifts and a uniformed porter. Situated in a highly coveted location at the edge of Regents Park on Marylebone's most sought after boulevard.

Portland Place is home to the Langham Hotel, RIBA and the BBC. Stations are sited at Great Portland Street, Regent's Park and Oxford Street. The Elizabeth line provides fast access to the city and airports from Bond Street.

Features

- Two Bedrooms
- Reception - Dining Room
- Kitchen
- Two Lifts and Resident Porter
- Lease to 2123
- Eighth Floor

Portland Place, London, W1B



Total area (approx.): 61.9 sq. m (666.3 sq. ft)