



Marylebone Road, NW1

£3,000,000

Dexters



Marylebone Road, NW1

This impressive three bedroom is arranged over two levels and has westerly views across London's skyline. Situated in a modern building this penthouse apartment has a separate kitchen, floor to ceiling windows and 24-hour uniformed porters.

The property has two large reception rooms, a separate modern kitchen, three double bedrooms which all have en suite bathrooms, a utility room and ample storage throughout.

The large windows provide superb natural light throughout and residents benefit from a gym, 24-hour portage and underground parking for three to four cars.

Marathon House is a portered modern building which is served by the vibrant shops, bars and restaurants of Marylebone, with easy access to the West End and moments from Baker Street underground station and the open spaces of Regents Park.

Features

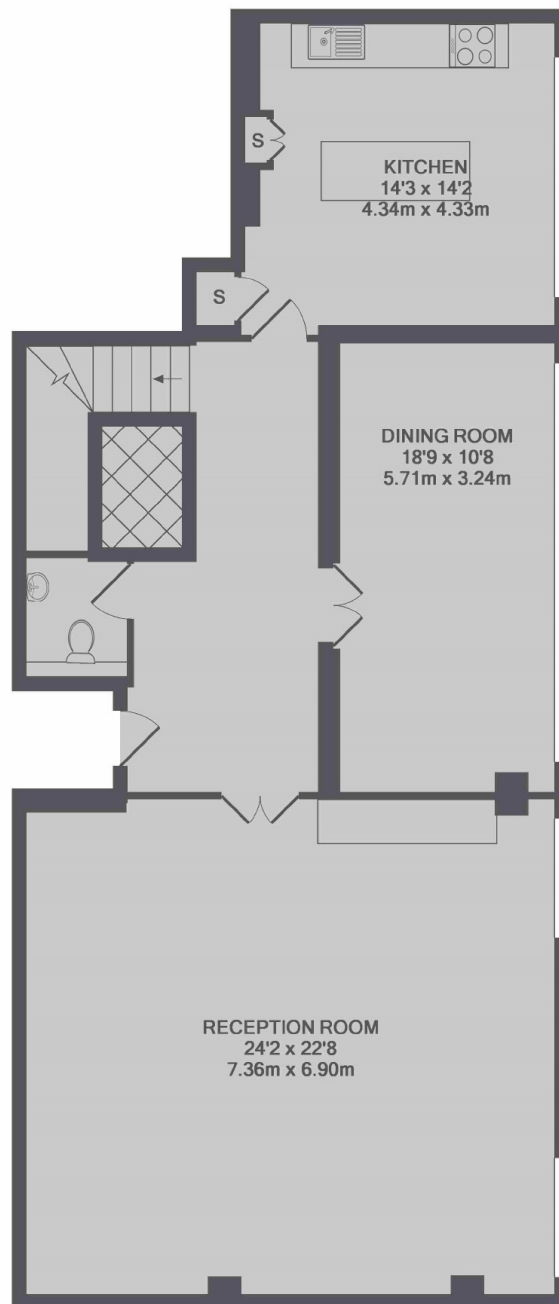
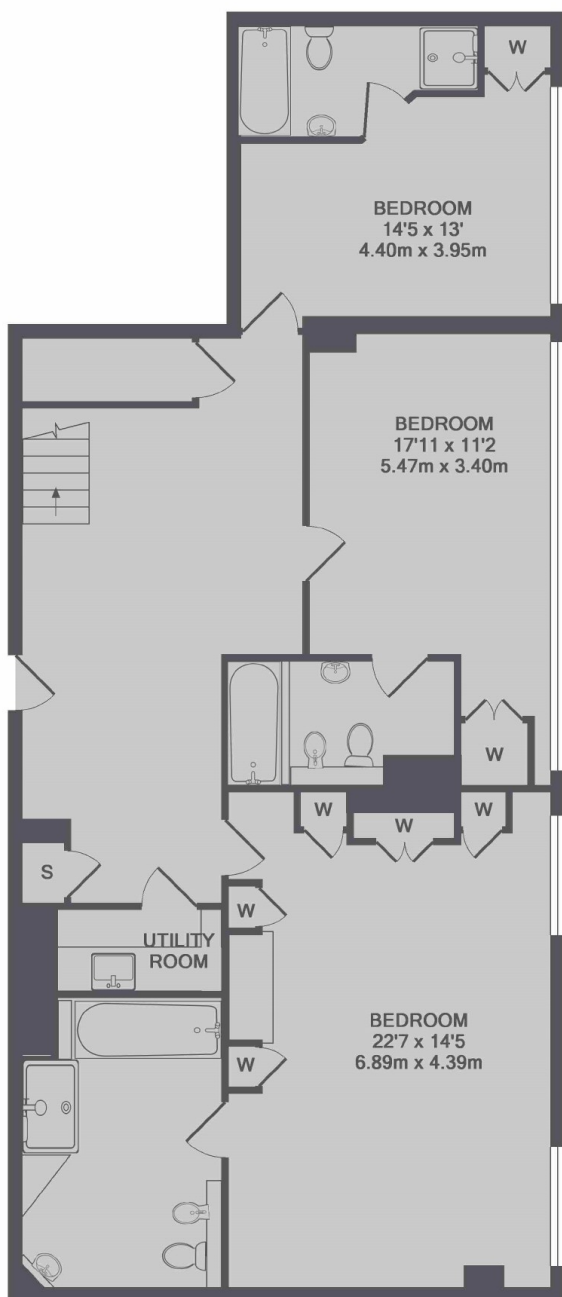
- Duplex Apartment
- Approx 2,500 Sq Ft
- Three Double Bedrooms
- Three Bathrooms
- 24-Hour Uniformed Porters
- Under-Building Parking







Marylebone Road, London, NW1



TOTAL APPROX. FLOOR AREA 2447 SQ.FT. (227.3 SQ.M.)