



## Allsop Place, NW1

£1,100,000

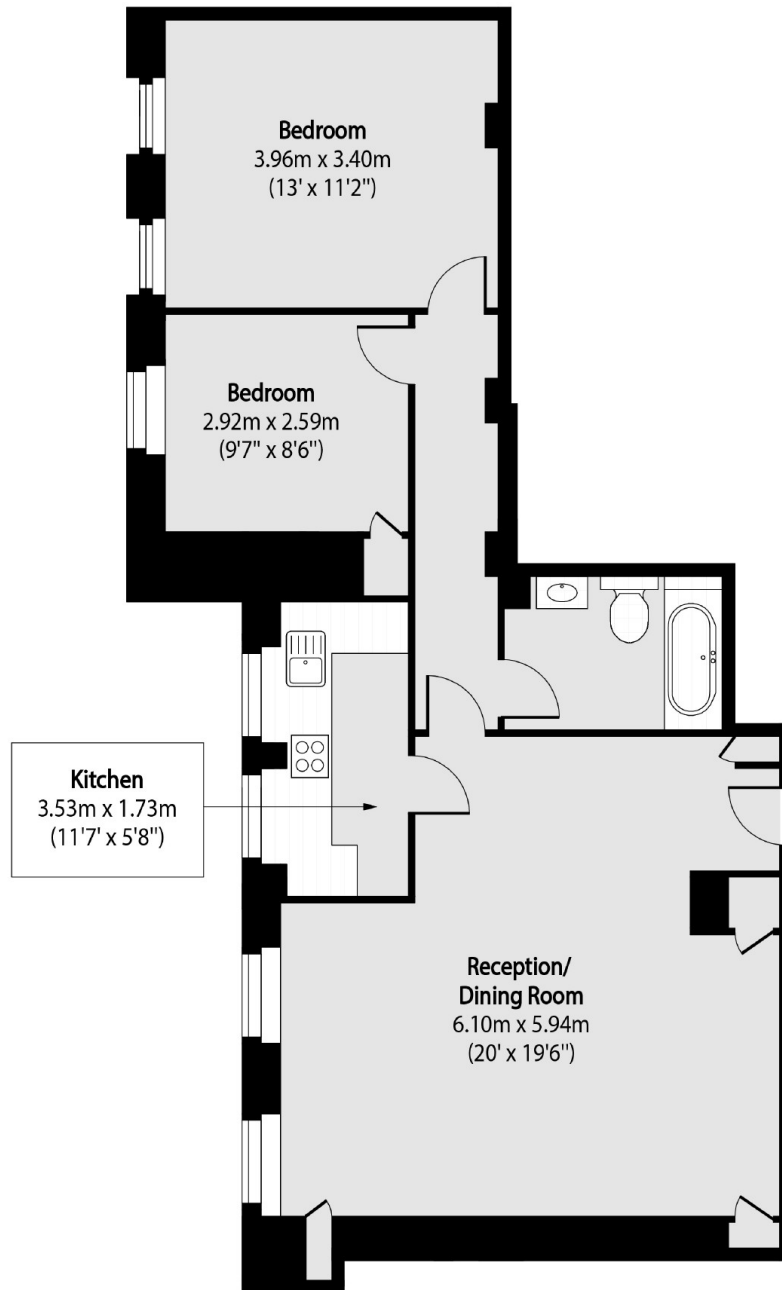
A two double bedroom apartment with views towards Regents Park. Situated moments from Marylebone High Street in a residential block with a porter.

Located moments from Marylebone High Street, Regent's Park and the transport links of Baker Street Station.

### Features

Two Double Bedrooms  
Kitchen  
Reception-Dining Room  
Porter  
Two Lifts  
Lease To 2149

# Allsop Place, London, NW1



Total area (approx): 70.98 sq m (764 sq. ft)