



Great Cumberland Place, W1H

£700 Per week

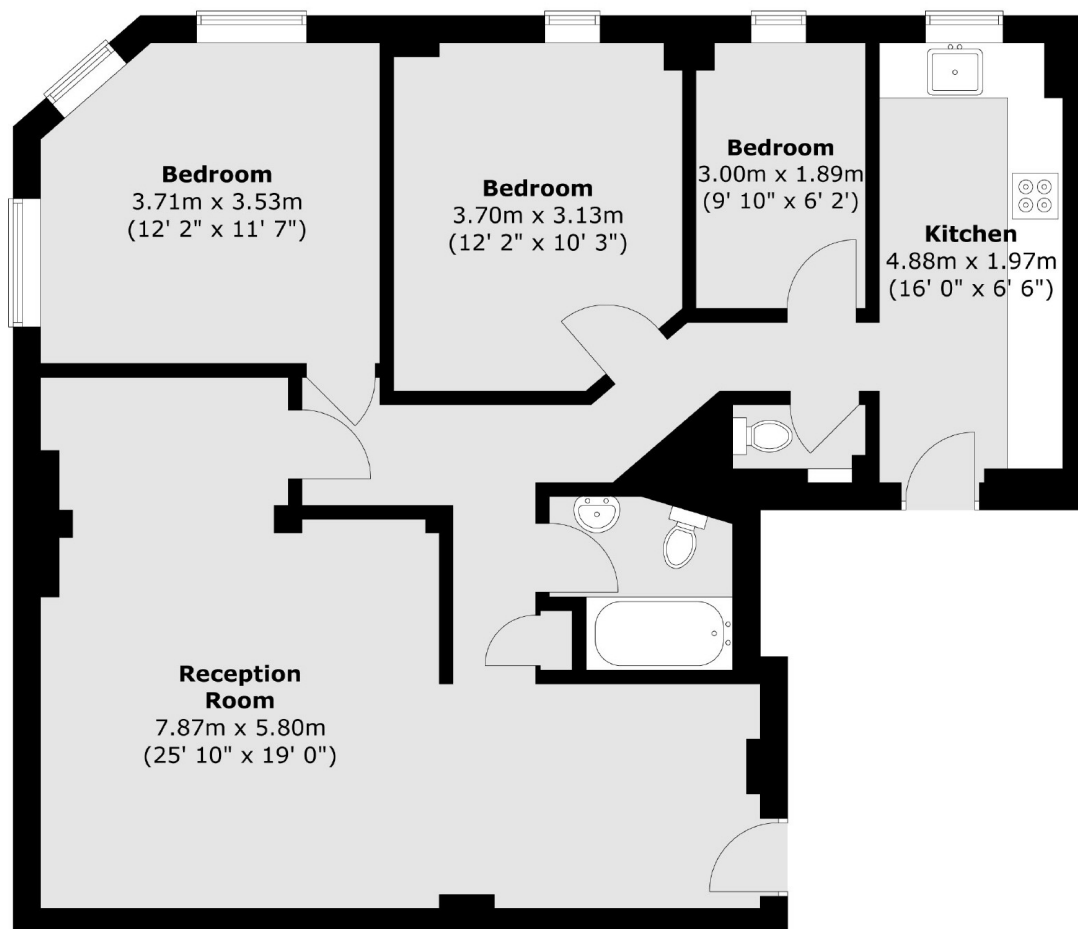
A two bedroom apartment on the third floor of this purpose built block, moments from Hyde Park and Oxford Street. Residents benefit from CCTV, 24 hour uniformed concierge and modern lifts. The flat has two bedrooms, kitchen, separate reception room, a study, bathroom and a guest WC.

Great Cumberland Place is a short walk from the boutique shops, bars and restaurants of Marylebone High Street. Portman Village, which has become the culinary centre for Marylebone's foodies, is just a few streets away; the independent restaurants, cafés and wine bars are popular with locals and tourists alike.

Features

- Two Double Bedrooms
- Separate Reception Study
- Third Floor Flat
- Lift And Concierge
- Moments From Hyde Park

Great Cumberland Place, London, W1H



Total area (approx.) : 89.1 sq. m (959 sq. ft)