



## Great Cumberland Place, W1H

£750 Per week

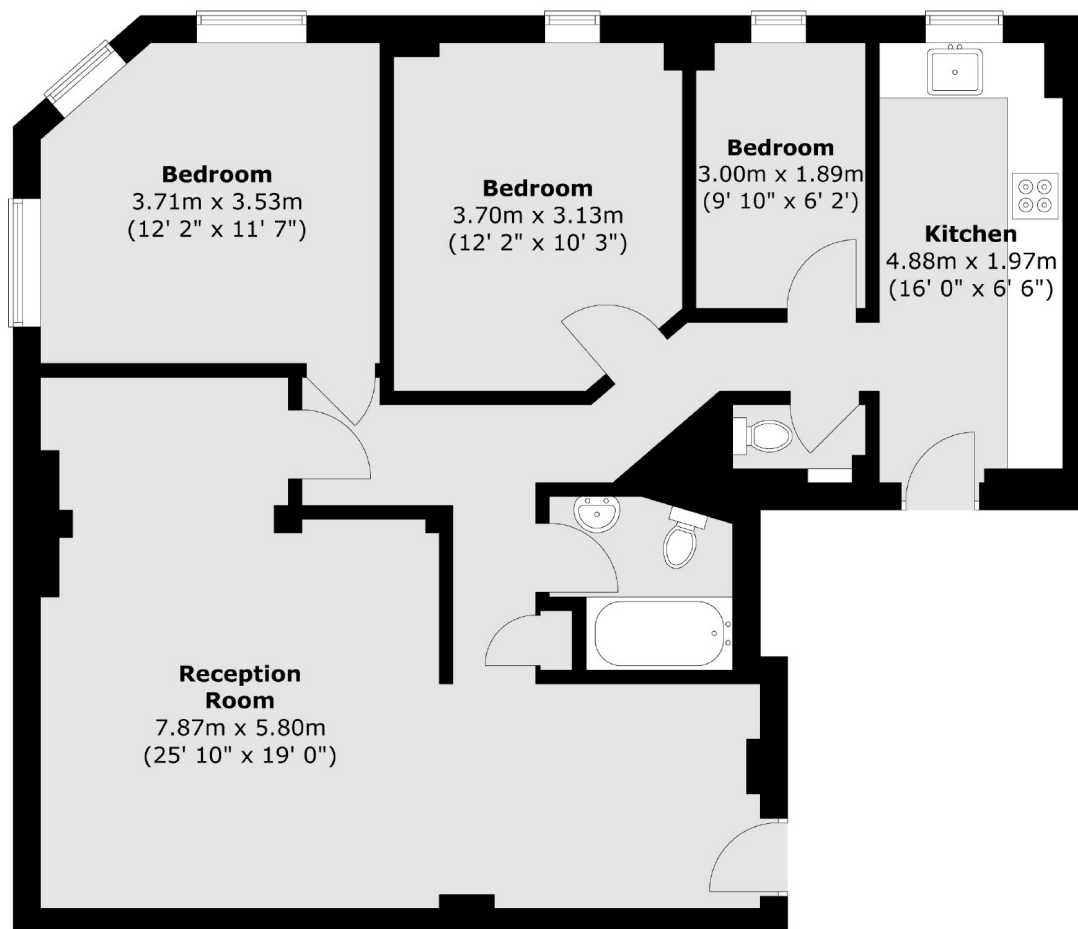
A three bedroom apartment on the third floor of this purpose built block, moments from Hyde Park and Oxford Street. Residents benefit from CCTV, 24 hour uniformed concierge and modern lifts. The flat has three bedrooms, kitchen, separate reception room, bathroom and a guest WC.

Great Cumberland Place is a short walk from the boutique shops, bars and restaurants of Marylebone High Street. Portman Village, which has become the culinary centre for Marylebone's foodies, is just a few streets away; the independent restaurants, cafés and wine bars are popular with locals and tourists alike.

### Features

Third Floor Flat  
Lift And Concierge  
Moments From Hyde Park  
Three Bedrooms  
Kitchen & Separate Reception  
Bathroom & Guest WC

# Great Cumberland Place, London, W1H



Total area (approx.) : 89.1 sq. m (959 sq. ft)