



Portland Place, W1B

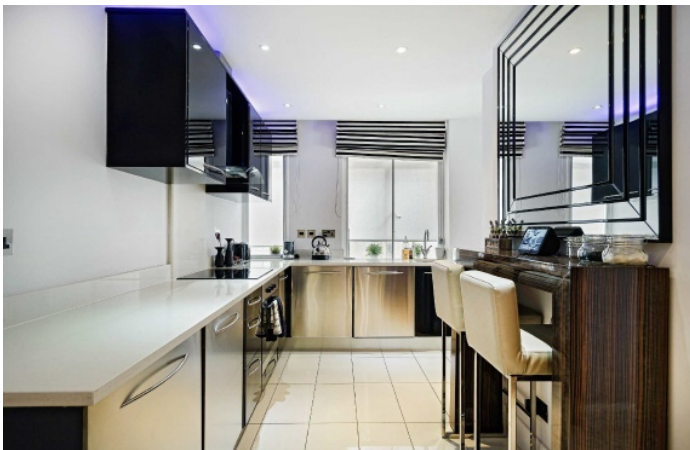
£1,125,000

A period apartment on Portland Place famous for its architecture and proximity to the West End and Regent's Park.

Portland Place is superbly positioned with London's Medical streets and Marylebone High Street to the West, Fitzrovia to the East and Regent's Street to the South.

Features

Portered Building
Two Double Bedrooms
En Suite Bathroom
En Suite Shower Room
Reception
Lease To 2115



Portland Place, W1B

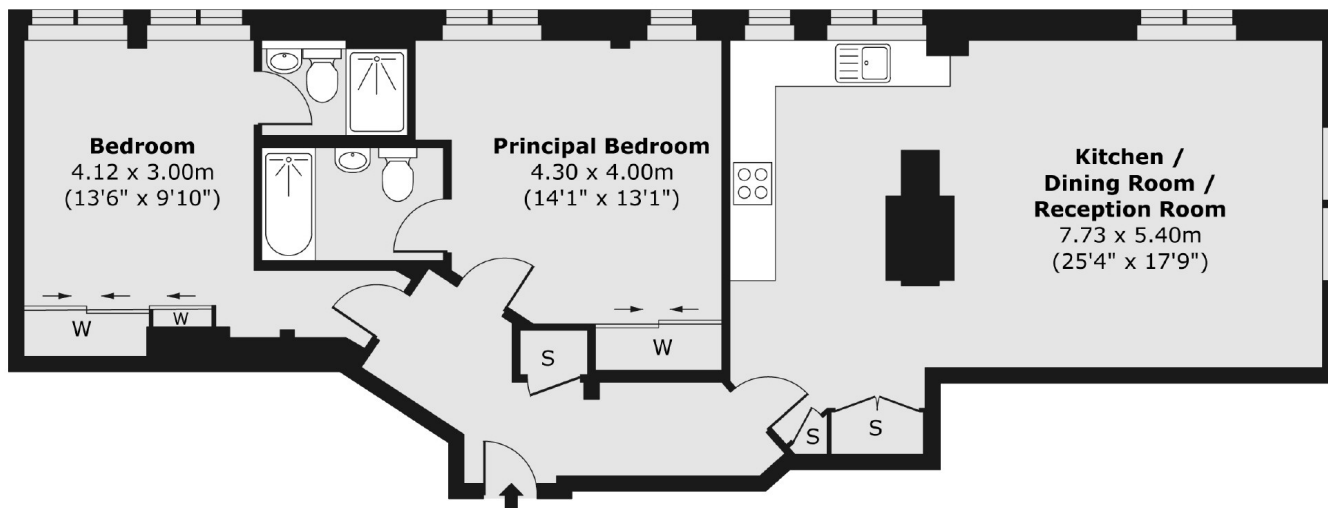
Located at the corner of the building the bright reception space benefits from a dual aspect and has adequate dining space.

The area leads through to the contemporary styled kitchen with fitted appliances, breakfast bar and ample storage, both bedrooms are large double rooms with fitted wardrobes and en suites.



Portland Place, London, W1B

Lower Ground Floor



Total Area (approx.): 79.42 sq. m (855 sq. ft)