



Seymour Street, W1H

£1,850,000

A two double bedroom first floor apartment in modern building set behind a period facade. Equipped with comfort cooling and a passenger lift.

Located off Edgware Road a short walk from Marble Arch Tube Station, Oxford Street and Hyde Park.

Features

- Two Double Bedrooms
- Two Shower/Bathrooms
- Lift
- Comfort Cooling
- Open-Plan Kitchen/Reception
- Lease To 2138



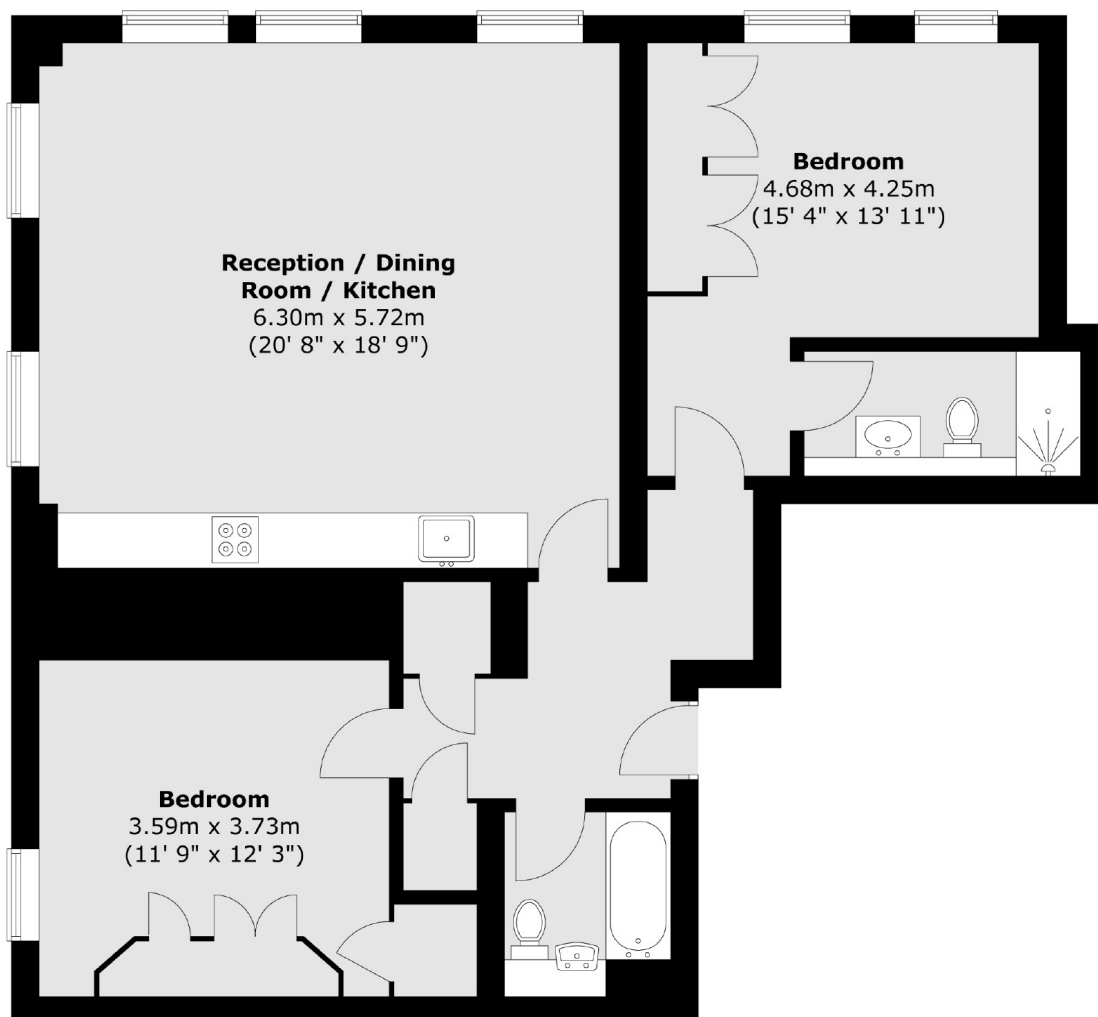
Seymour Street, W1H

In a building of eight apartments this first floor apartment has a kitchen with Gaggenau appliances which is open to the dining and reception room with a dual aspect and 2.7 m high ceilings. Both bedrooms are double size and the main bedroom is en suite. The bathrooms have limestone and marble finishes.



Seymour Street, London, W1H

First Floor



Total area (approx.) : 92.3 sq. m (993 sq. ft)