



Park Crescent, W1B

£650,000

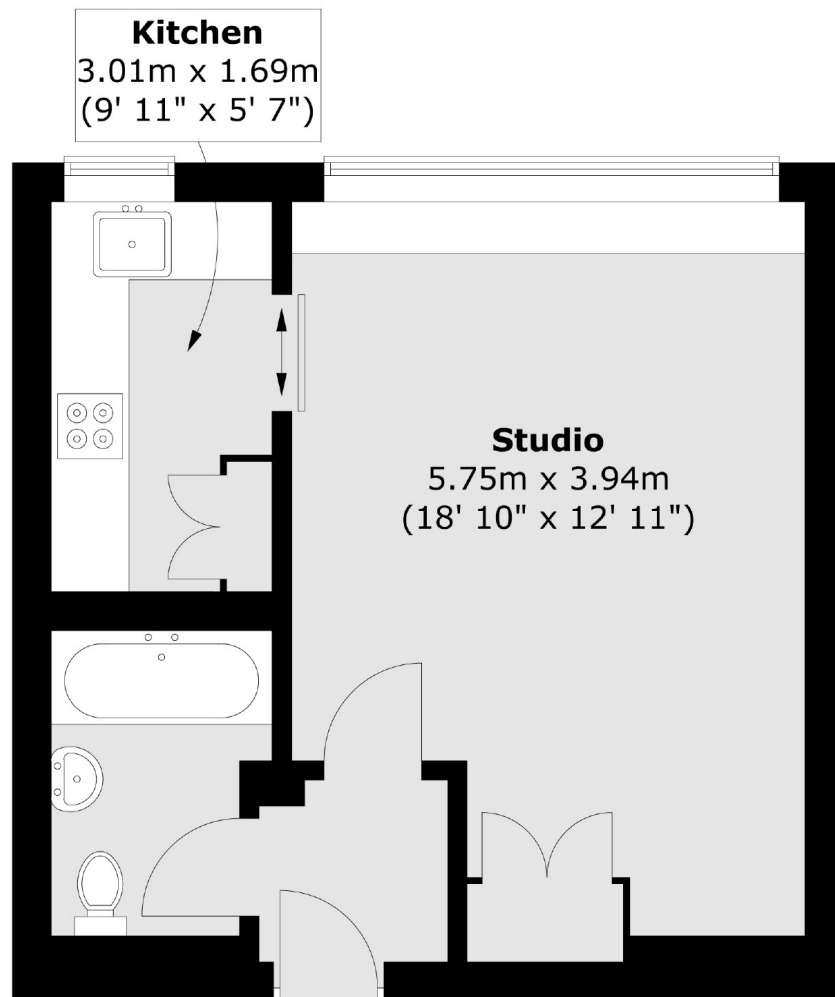
A studio apartment located in a modern building behind a period facade. Residents benefit from a 24 hour concierge service and access to the gated Park Square gardens opposite.

Regent's Park, Marylebone High Street, and the excellent transport links of the area are located nearby.

Features

- Regents Park Location
- Studio Room
- Kitchen
- 24 Hour Concierge
- Attractive Communal Gardens
- Lease To 2157

Park Crescent, London, W1B



Total area (approx.) : 34.1 sq. m (367 sq. ft)