



Bird Street, W1U

£775,000

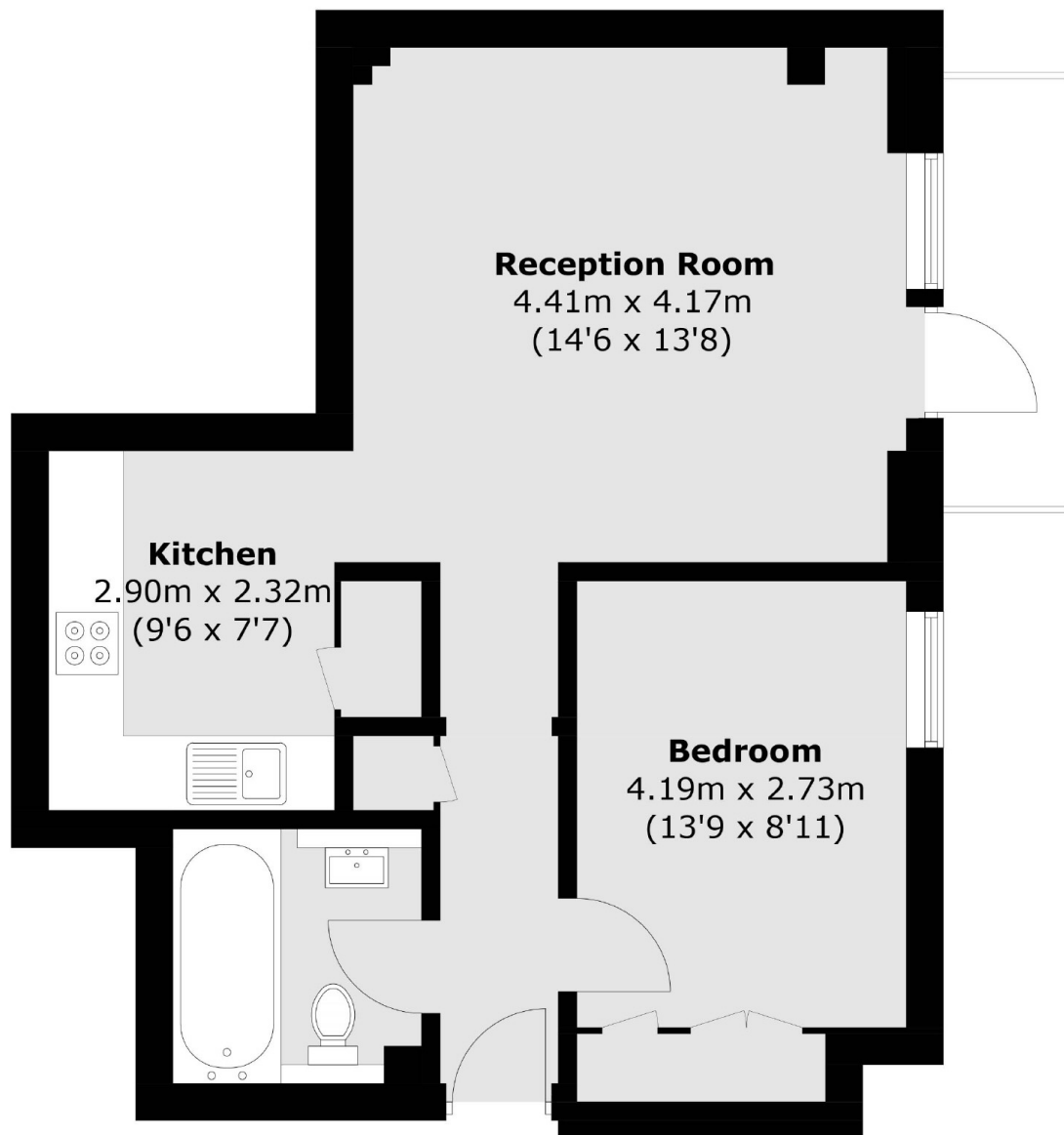
A one bedroom first floor apartment with a private terrace. Located in a modern building with a lift, concierge and CCTV adjacent to Selfridges and Bond Street Station where the Elizabeth Line provides direct links to London Heathrow.

Located with 200 metres of Selfridges and Bond Street Station where the Elizabeth Line provides direct links to London Heathrow.

Features

- One Bedroom
- Reception-Dining
- Kitchen
- Terrace
- First Floor
- Resident Concierge And Lift
- Lease 999 Years From 1997

Bird Street, London, W1U



Total area (approx.): 47.7 sq. m (513.4 sq. ft)
Patio (approx.): 3.4 sq. m (36.6 sq. ft)