



Wimpole Street, W1G

£899,950

An interior designed apartment located in turn key condition located on Wimpole Street. Accessible to Marylebone High Street, Regents Park and the West End.

Local transport links are Bond Street, Oxford Street and Regent's Park stations.

Features

- Chain Free
- Private Entrance
- Modern Studio Apartment
- High Ceilings
- Lease 125 years from 1995
- Prime Central London



Wimpole Street, W1G

The entire home has been meticulously renovated, ensuring a flawless finish and excellent use of space throughout. It comprises a spacious studio room with a fitted wall bed which allows for transforming the space in a few seconds. There's also a separate, modern kitchen and a tiled bathroom. The property further benefits from large windows, high ceilings and wood and tiled flooring.



Wimpole Street, London, W1G

WIMPOLE STREET, W1G

Approx. gross internal area

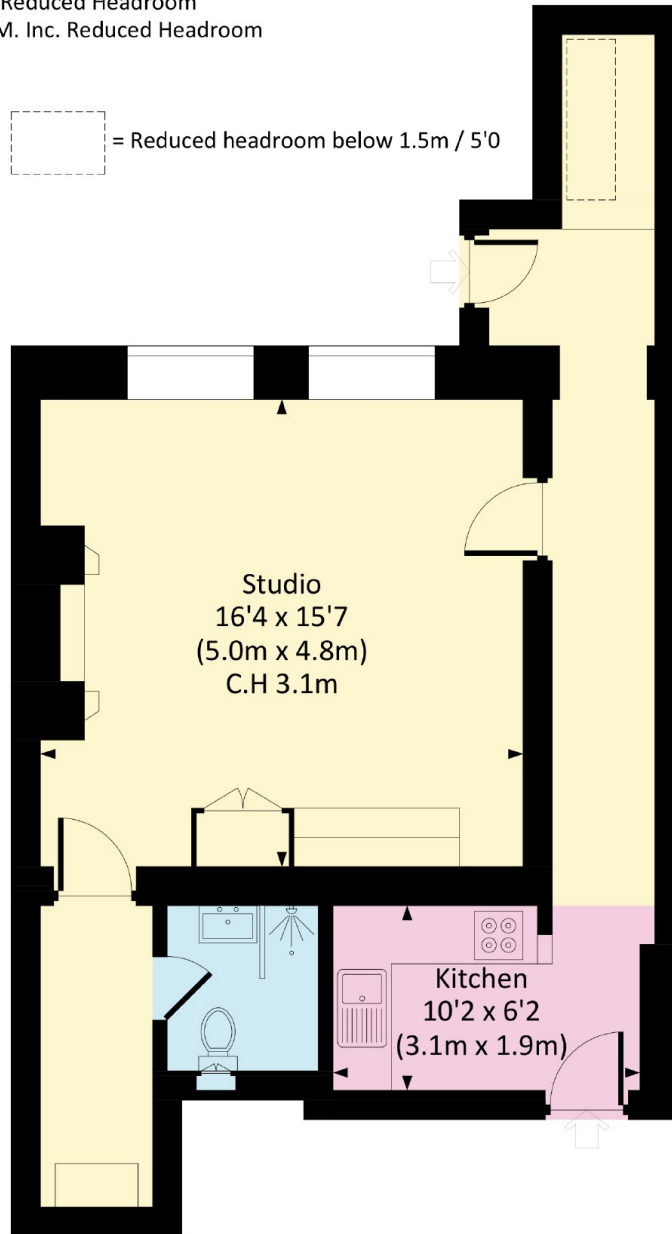
538 Sq Ft. / 50.0 Sq M.

10 Sq Ft. / 0.9 Sq M. Reduced Headroom

548 Sq Ft. / 50.9 Sq M. Inc. Reduced Headroom



= Reduced headroom below 1.5m / 5'0



LOWER GROUND FLOOR



All measurements have been made in accordance with RICS code of Measuring Practice which are approximate only and only for illustrative purposes. For the avoidance of doubt, Dowling Jones Design shall not be liable for any reliance on these measurements. © 2023 www.dowlingjones.com 020 7610 9933