



Devonshire Street, W1G

£490,000

A bright studio apartment situated in a period block with a resident porter, two passenger lifts and residents roof terrace. Located in a prime central London location with the world class amenities of Marylebone High Street and Regents Park on the doorstep.

Located in the centre of Marylebone Village at the junction of the High Street and Devonshire Street. Local Stations are sited at Baker Street, Bond Street and Regents Park.

Features

- Third Floor
- Two Passenger Lifts
- Resident Porter
- Residents Roof Terrace
- Service Charge includes Heating and Hot Water

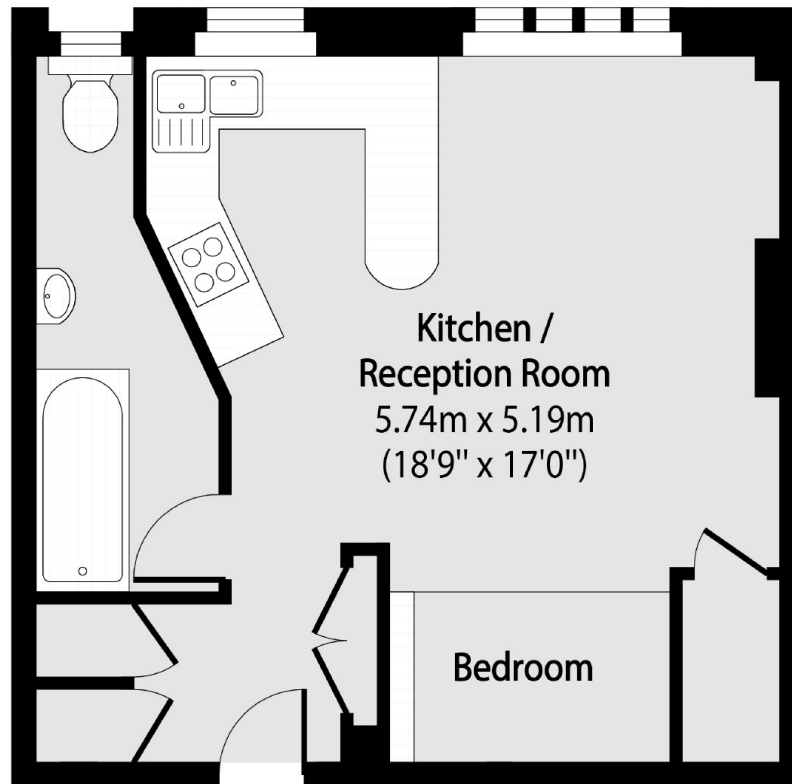


Devonshire Street, W1G

The location provides residents with easy access to the restaurants, cafés and retail facilities of the area. The green space of Regents Park is located a 0.5 mile away. Basildon Court is a well maintained residential block with two passenger lifts, a residents roof terrace and a day porter.



**Devonshire Street,
London, W1G**



Total area (approx): 35.34 sq m (380 sq. ft)