



Seymour Place, W1H

£1,175,000

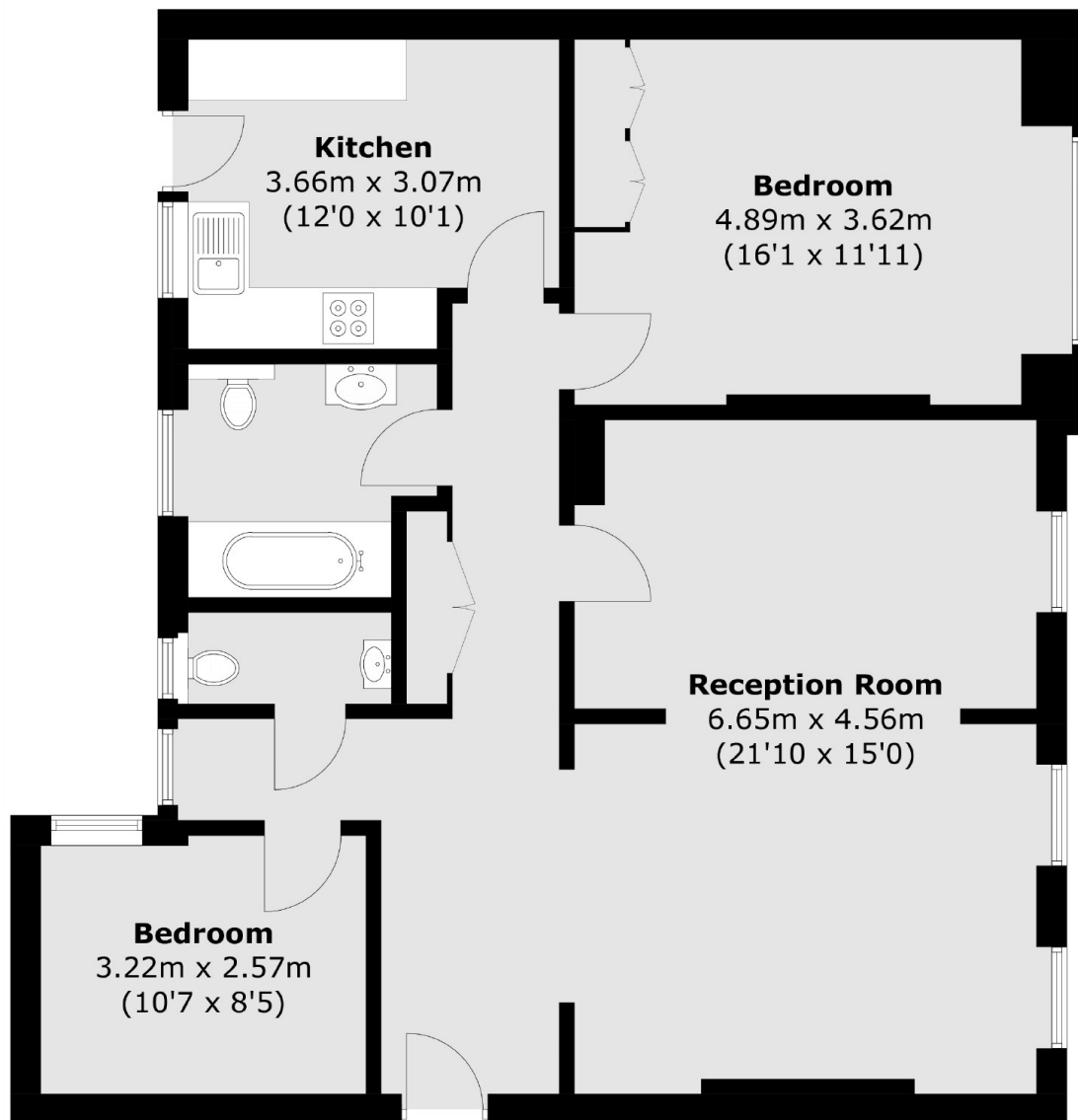
A two double bedroom apartment situated in an attractive residential building with a resident porter. Located moments from Portman Village, London's Hyde Park and the shops and restaurants of Marylebone.

Stations are located at Marble Arch (Central Line), Edgware Road (Circle and District and Hammersmith Lines) and Baker Street (Bakerloo, Circle and Hammersmith & City, Jubilee, Metropolitan lines). London Marylebone (Chiltern Line).

Features

- Two Double Bedrooms
- Reception - Dining Room
- Wood Floors
- Third Floor
- Remaining Lease 139 years

Seymour Place, London, W1H



Total area (approx.): 92.2 sq. m (992.4 sq. ft)