



Seymour Place, W1H

£1,395 Per week

A beautifully refurbished three bedroom apartment on the second floor, with lift, of a portered building on Seymour Place. The property has a good sized reception, separate modern kitchen, three bedrooms and two bathrooms.

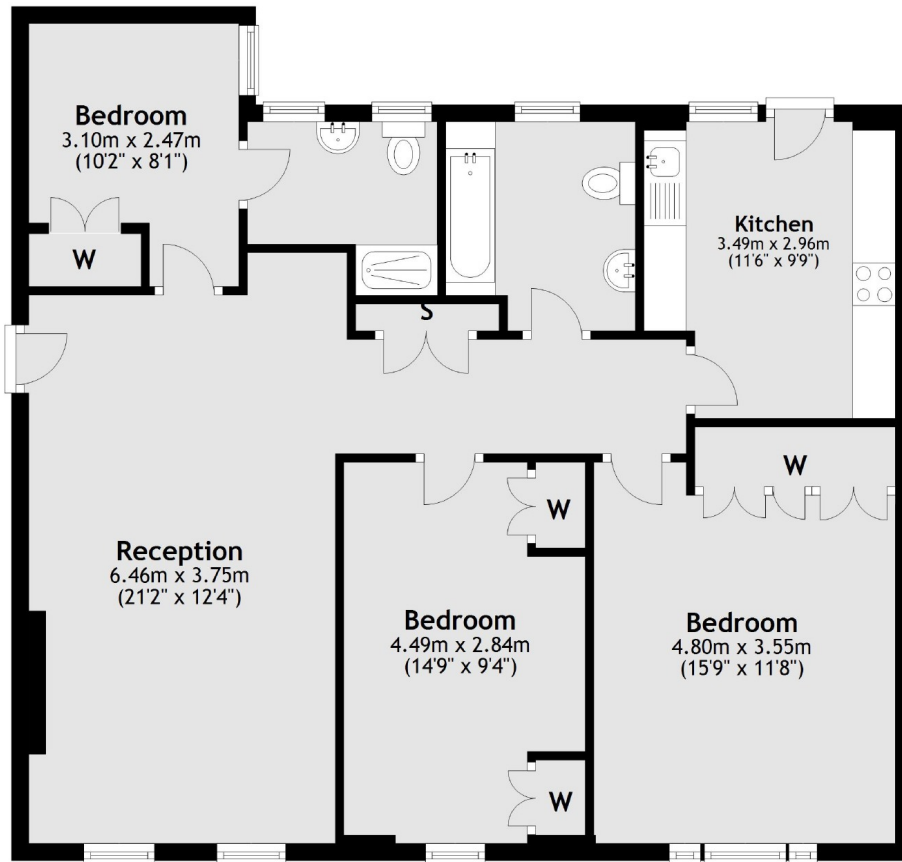
Seymour Place is close to the shops, bars and restaurants of Portman Village and Marylebone Village, both a favourite with locals providing a village vibe in the heart of central London.

Features

- Second Floor
- Modern
- Lift And Porter
- Three Bedrooms
- Two Bathrooms
- Separate Kitchen

Seymour Place, London, W1H

Second Floor



Total area: approx. 89.3 sq. metres (961.1 sq. feet)