



Marylebone High Street, W1U

£1,500,000

A modern three bedroom, two bathroom apartment with a lift, air conditioning and secure under building parking. The central location provides easy access the amenities of Marylebone High Street and Regents Park.

Located on the first floor of this well maintained building on the corner of Beaumont Street and Marylebone High Street.

Features

- Three Bedrooms
- Two Bathrooms
- Secure Under Building Parking
- Air Conditioning & Lift
- Lease 999 years from 2010
- Share of Freehold

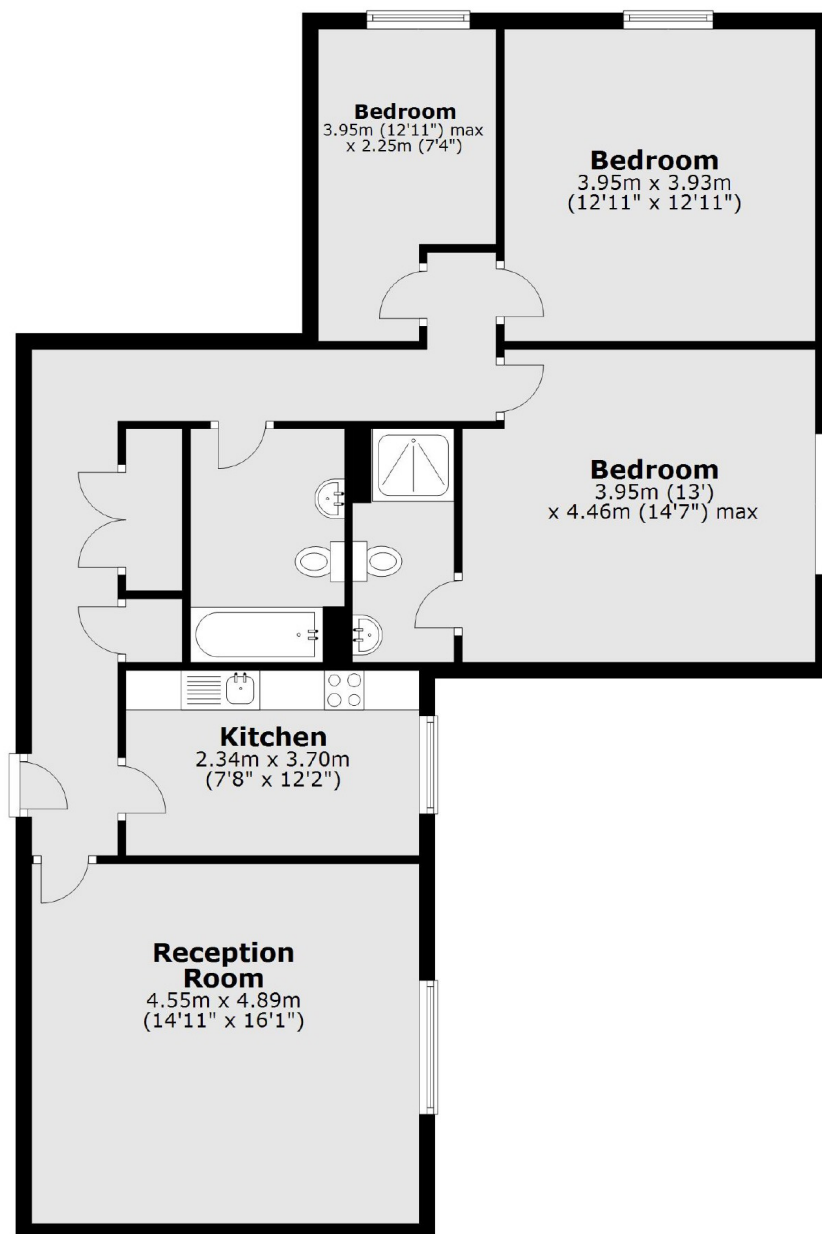


Marylebone High Street, W1U

The reception room has adequate space to dine, the modern fitted kitchen is arranged separately. The main bedroom has an en suite shower room and there are two additional bedrooms and a bathroom.



Marylebone High Street, London, W1U



Total area: approx. 99.2 sq. metres (1067.4 sq. feet)