



## George Street, W1H

£2,475 Per week

A beautifully refurbished four bedroom apartment within this prestigious portered block on George Street.

The nearest stations can be found at Marble Arch, Edgware Road, Baker Street and Marylebone stations.

### Features

- Lift And Porter
- Modern Specification
- Living/Dining Room
- Four Bedrooms
- Two Bathrooms
- Guest WC



## George Street, W1H

There is a large double reception room with ample space for living and dining areas, a separate stylish kitchen with modern built-in appliances and a guest WC off the hallway.

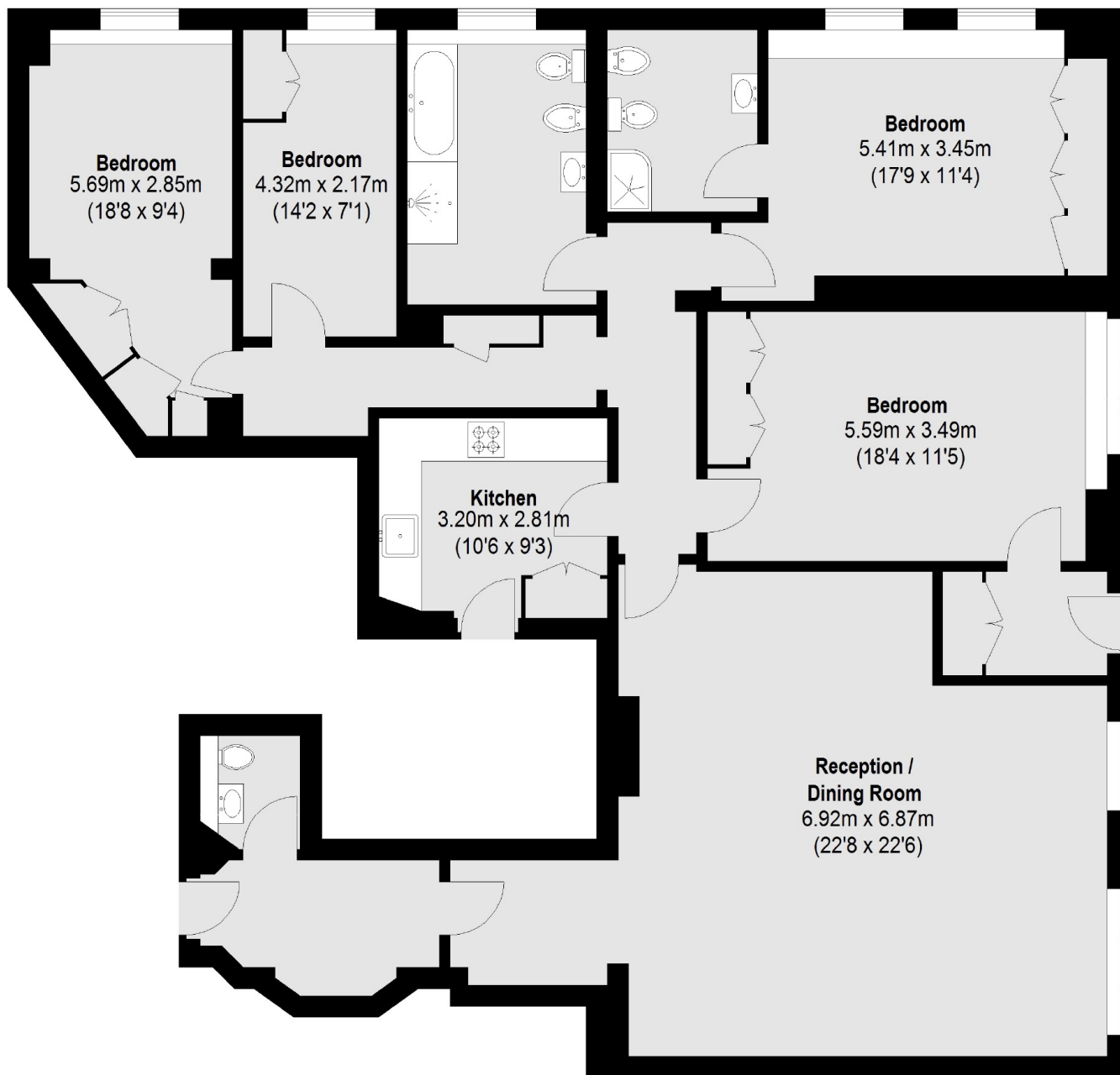
There are four bedrooms with built-in wardrobes, an en suite shower room off the principal bedroom and a further bathroom off the hallway.

An array of fashionable boutique shops and restaurants can be found locally within Portman Village and Marylebone village and the open spaces of Hyde Park are a short walk away.





# George Street, London, W1H



Total area (approx.): 165.26 sq. m (1779 Sq. ft)