



Montagu Square, W1H

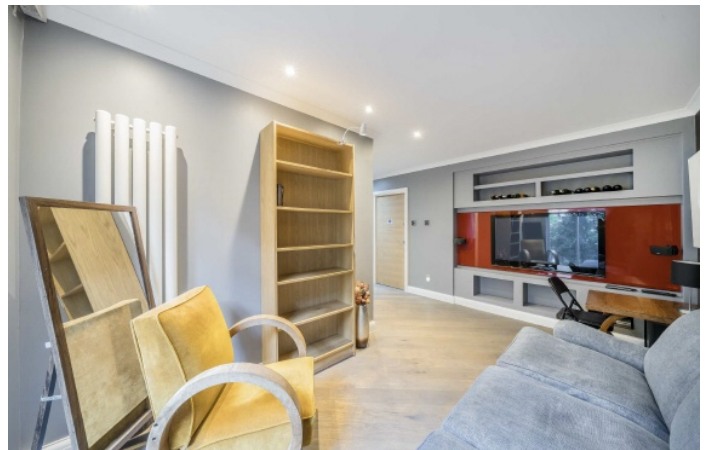
£1,225 Per week

A modern lateral apartment forming part of this purpose built block located on one of London's most desirable Garden Squares.

There are numerous transport links which can be found at Marble Arch, Baker Street, Marylebone and Edgware Road stations to name a few.

Features

- Garden Square
- Separate Kitchen
- Three Bedrooms
- Two Bathrooms
- Guest WC
- Terrace



Montagu Square, W1H

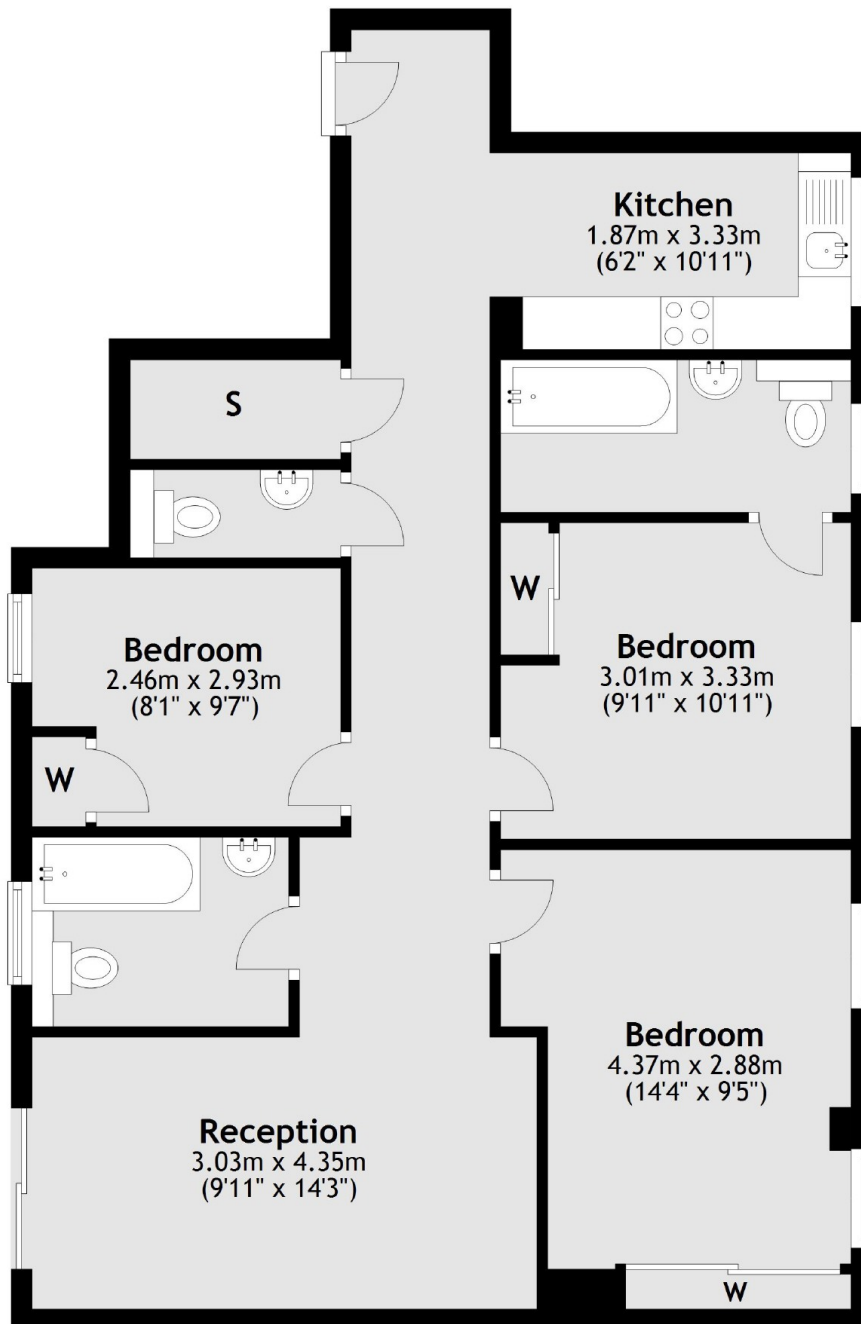
The flat has a reception room with doors leading onto a private terrace, separate eat-in kitchen, three double bedrooms with built-in storage, en suite bathroom to the principal bedroom, further bathroom off the hallway and a guest WC.

Montagu Square is close to both Hyde Park and Regent's Park and only a short walk from Marylebone High Street, which is home to a number of fashionable shops, bars, cafes and restaurants.



Montagu Square, London, W1H

Lower Ground Floor



Total area: approx. 80.2 sq. metres (863.4 sq. feet)