



Luxborough Street, W1U

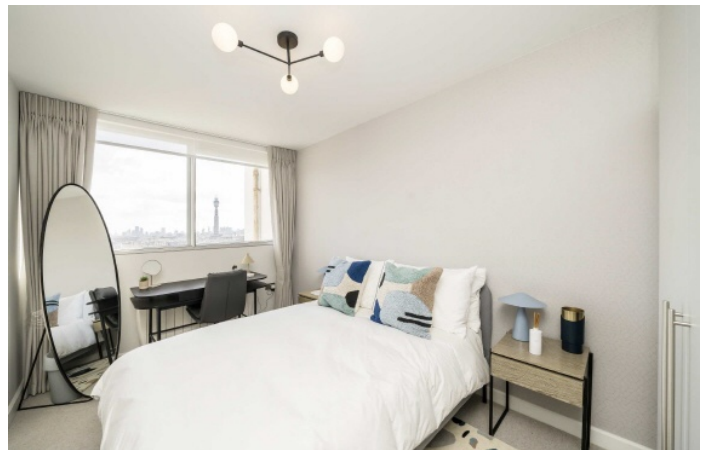
£950 Per week

A newly refurbished duplex apartment on the sixteenth and seventeenth floors of this popular block in the heart of Marylebone.

Luxborough Street is in Marylebone Village, with the vibrant shops and bars of Marylebone High Street close by. Baker Street station and the open spaces of Regent's Park are only a short walk away.

Features

- Duplex Apartment
- Newly Refurbished
- Two Double Bedrooms
- Modern Shower Room
- Balcony With Views
- Marylebone Village



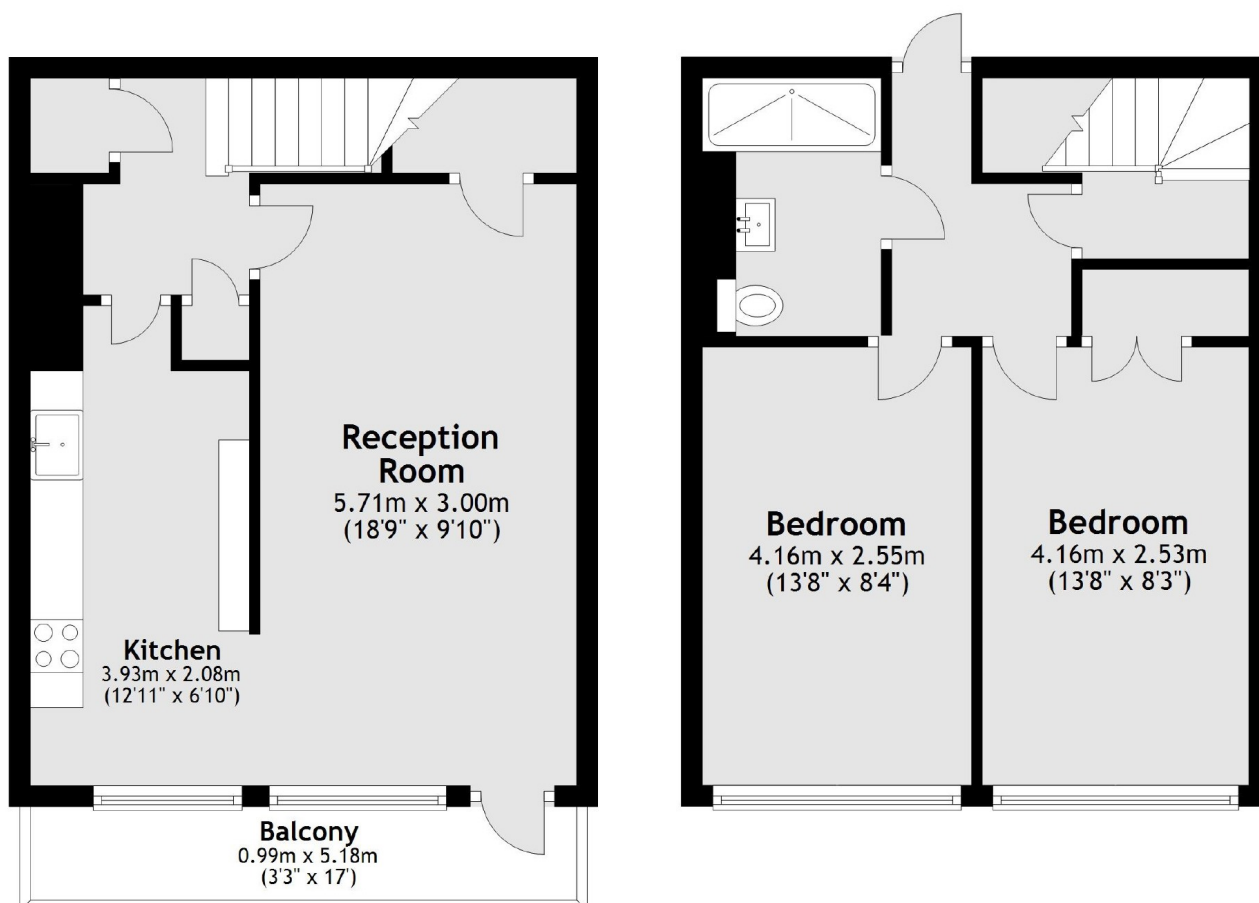
Luxborough Street, W1U

There is a stylish kitchen with modern built-in appliances and a kitchen bar. The reception room has access to the private balcony which has views across Marylebone and beyond.

Both bedrooms are double rooms and there is a shower room off the hallway.



Luxborough Street, London, W1U



Total area: approx. 69.5 sq. metres (748.0 sq. feet)