



Wigmore Street, W1U

£595 Per week

A two bedroom apartment on the fourth floor of an attractive period building in the heart of Marylebone Village. The flat has a large reception room with wood flooring, separate kitchen, two bedrooms and two bathrooms.

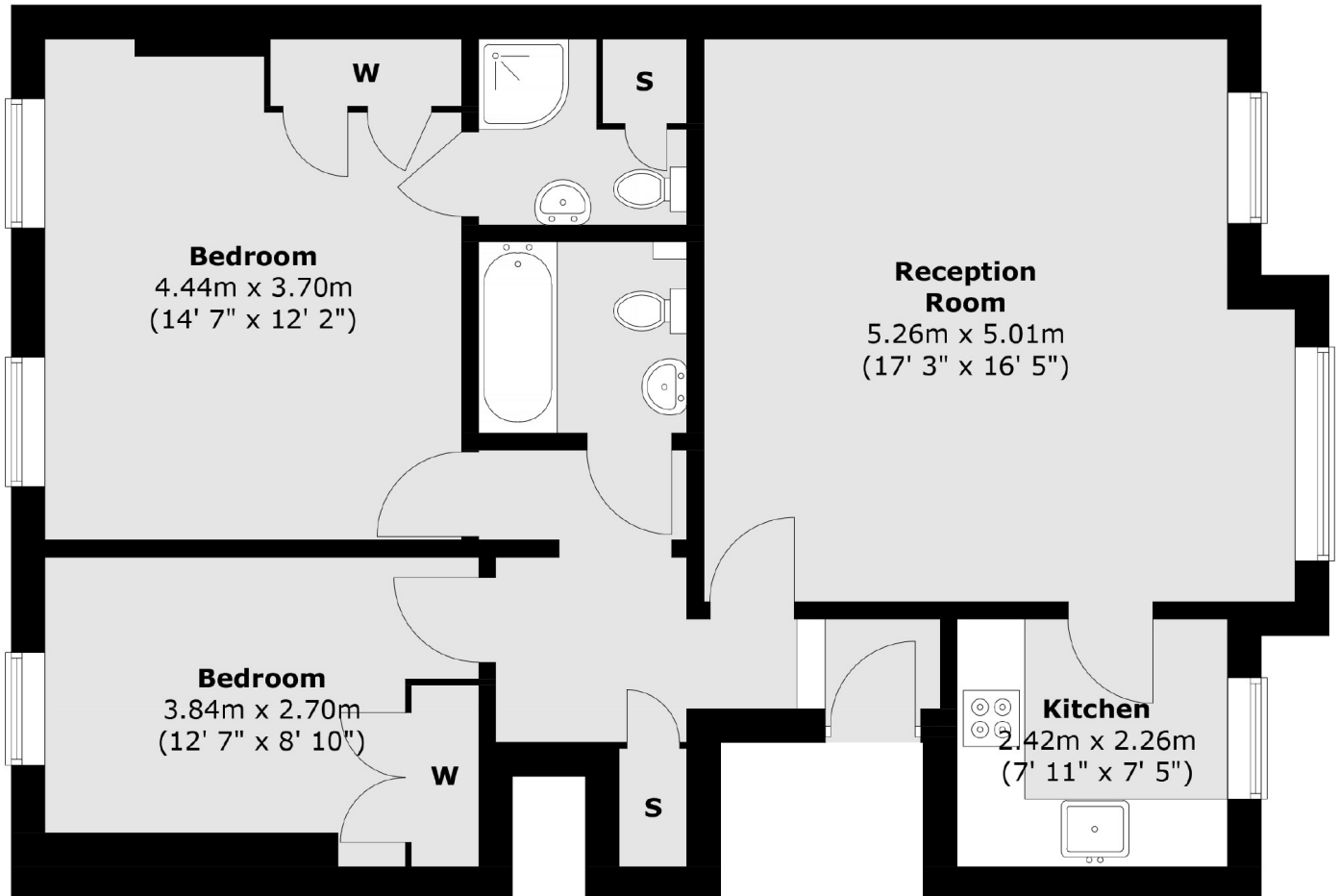
Located conveniently for the many restaurants of James Street and Marylebone. Bond Street Station is the nearest station and Selfridges is just moments away.

Features

Marylebone Village
Fourth Floor
Two Bedrooms
Two Bathrooms
Separate Kitchen
Large Reception

Wigmore Street, London, W1U

Fourth Floor



Total area (approx.) : 76.6 sq. m (824 sq. ft)