

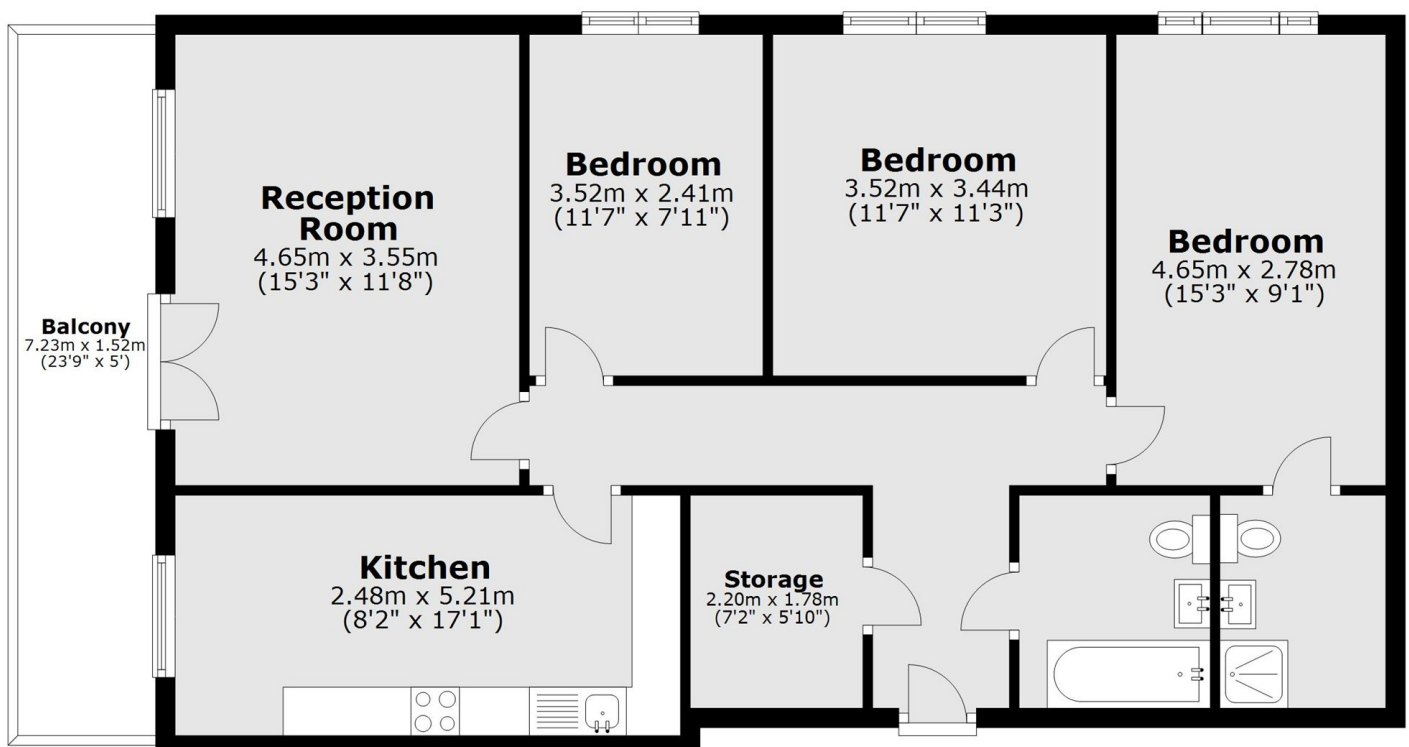
LAKESIDE DRIVE, NW10

£3,150 pcm

This bright and spacious three double bedroom apartment is situated on the sixth floor of a sought after development, while benefiting from two bathrooms and a allocated parking space.

- Three Double Bedrooms
- Two Bathrooms
- Sixth Floor Flat
- Allocated Parking
- Separate Kitchen
- Private Balcony

Sixth Floor



Total area: approx. 88.2 sq. metres (948.9 sq. feet)

LiFE RESIDENTIAL

203 Trentham Court, Victoria
Road, London, W3 6BT
Sales: 020 3668 1112
Lettings: 020 3668 1111

Energy Rating: . We aim to make our particulars both accurate and reliable. However they are not guaranteed; nor do they form part of an offer or contract. If you require clarification on any points then please contact us, especially if you're traveling some distance to view. Please note that appliances and heating systems have not been tested and therefore no warranties can be given as to their good working order.