

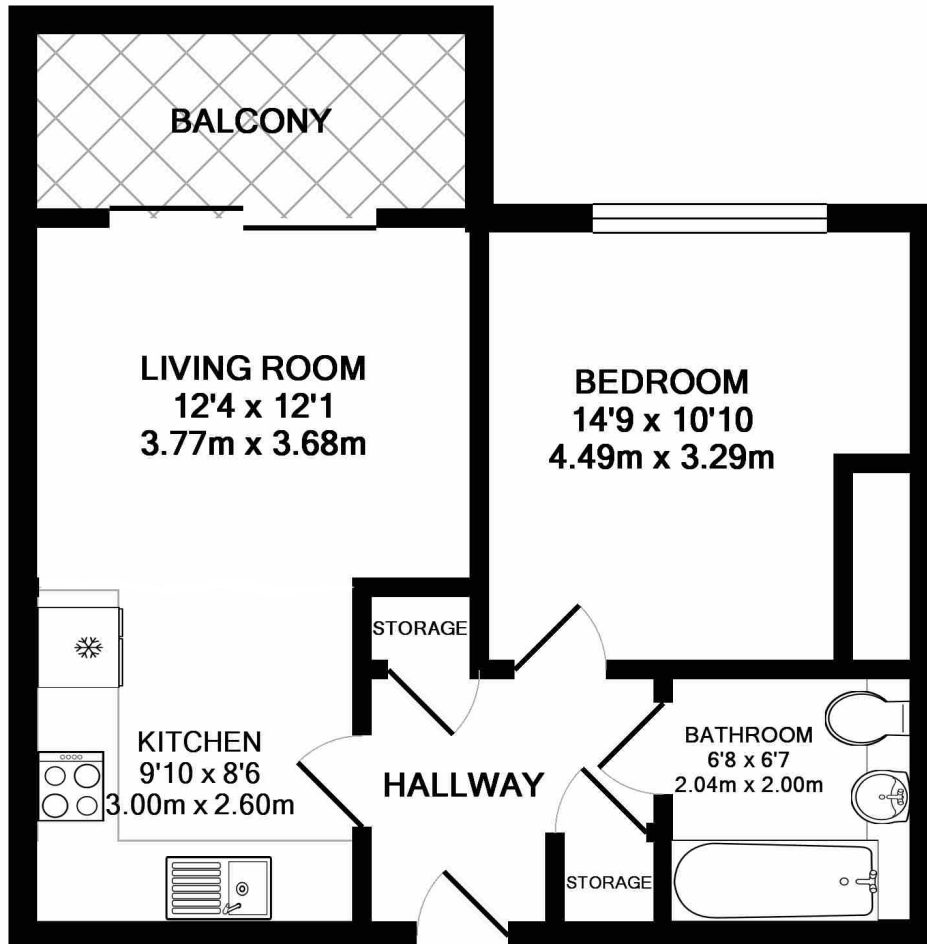


GLENTHORNE ROAD, W6

£350,000

Life Residential are proud to present this one bedroom apartment in the sought after Gooch House development. Located in vibrant Hammersmith, this spacious flat features a modern kitchen, open-plan living area, large master bedroom, and floor-to-ceiling windows. Located on the fifth floor (with lift access), finished to a high standard, with a bright open plan living

- One Bedroom
- One Bathroom
- Long Lease
- Lift Access
- Modern
- Roof Terrace



TOTAL APPROX. FLOOR AREA 409 SQ.FT. (38.0 SQ.M.)

Whilst every attempt has been made to ensure the accuracy of the floor plan contained here, measurements of doors, windows, rooms and any other items are approximate and no responsibility is taken for any error, omission, or mis-statement. This plan is for illustrative purposes only and should be used as such by any prospective purchaser. The services, systems and appliances shown have not been tested and no guarantee as to their operability or efficiency can be given

Made with Metropix ©2017

LiFE RESIDENTIAL

203 Trentham Court, Victoria
Road, London, W3 6BT
Sales: 020 3668 1112
Lettings: 020 3668 1111

Energy Rating: C. We aim to make our particulars both accurate and reliable. However they are not guaranteed; nor do they form part of an offer or contract. If you require clarification on any points then please contact us, especially if you're traveling some distance to view. Please note that appliances and heating systems have not been tested and therefore no warranties can be given as to their good working order.