

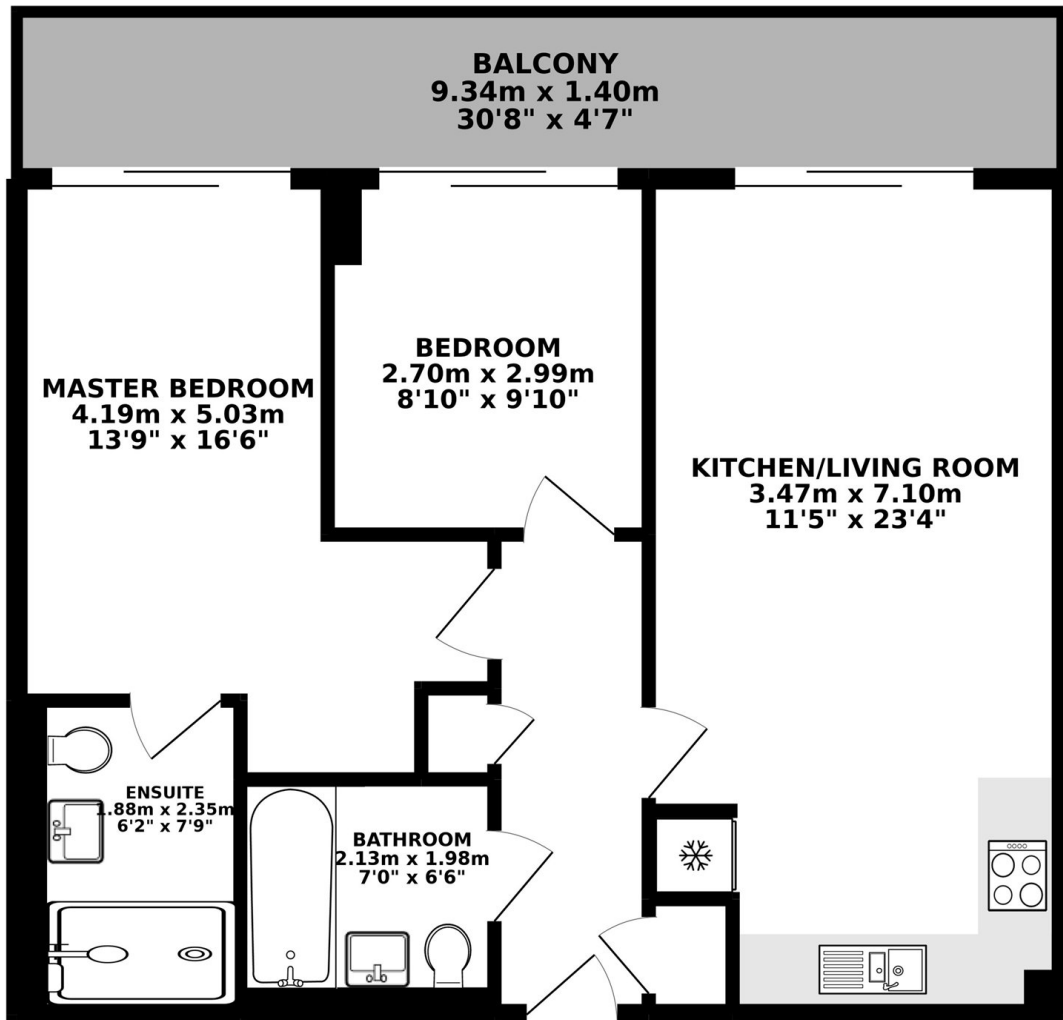


WEST CARRIAGE HOUSE, SE18

£475,000

An open plan, two bedroom, two bathroom property with a private balcony. This apartment consists of an spacious living space/kitchen with access to a private balcony, two double bedrooms, one of which offers an en suite, and a family bathroom.

- Two Double Bedrooms
- Two Bathrooms
- Private Balcony
- Gym
- 24hr Concierge
- Great Transport Links



TOTAL FLOOR AREA : 61.64 sq. m. (663.48 sq. ft.) approx.

Whilst every attempt has been made to ensure the accuracy of the floorplan contained here, measurements of doors, windows, rooms and any other items are approximate and no responsibility is taken for any error, omission or mis-statement. This plan is for illustrative purposes only and should be used as such by any prospective purchaser. The services, systems and appliances shown have not been tested and no guarantee as to their operability or efficiency can be given.
Made with Metropix ©2019



LiFE RESIDENTIAL

6 Victoria Parade, London,
SE10 9FR
Sales: 020 8446 2521
Lettings: 020 8418 3609

Energy Rating: B. We aim to make our particulars both accurate and reliable. However they are not guaranteed; nor do they form part of an offer or contract. If you require clarification on any points then please contact us, especially if you're traveling some distance to view. Please note that appliances and heating systems have not been tested and therefore no warranties can be given as to their good working order.