



Poppy Cottage

Victoria Street | | Southwold | IP18 6JQ

Guide Price £550,000

DURRANTS
SINCE 1853

Key features

- Tucked Away Location
- Successful Holiday Let
- Newly Renovated
- No Onward Chain
- Seaside Market Town

Description

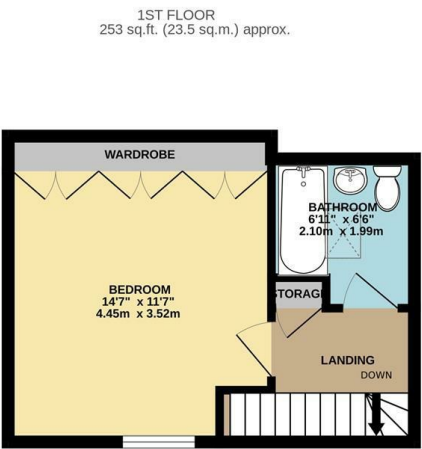
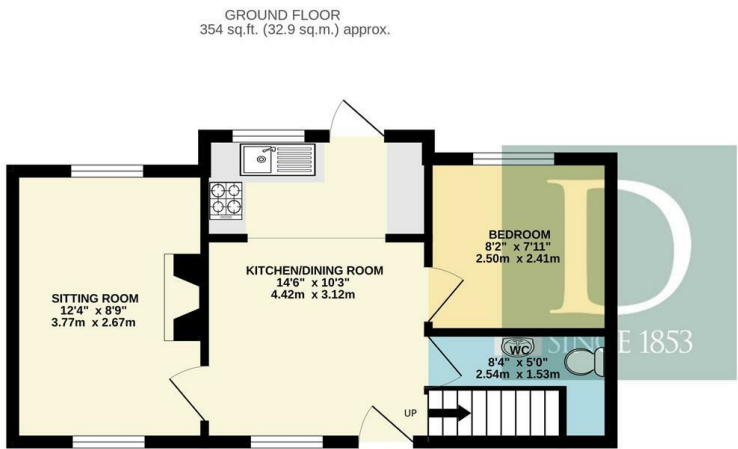
Poppy Cottage is a very well presented and recently renovated cottage, offering an idyllic seaside escape in a tucked away private location.

Directions





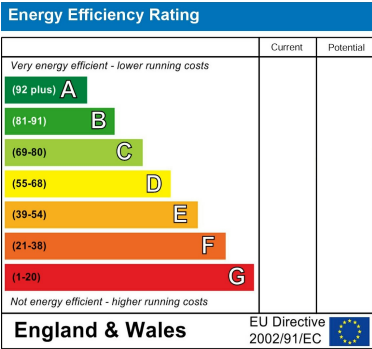
Floor plans



TOTAL FLOOR AREA : 607 sq.ft. (56.4 sq.m.) approx.

Whilst every attempt has been made to ensure the accuracy of the floorplan contained here, measurements of doors, windows, rooms and any other items are approximate and no responsibility is taken for any error, omission or mis-statement. This plan is for illustrative purposes only and should be used as such by any prospective purchaser. The services, systems and appliances shown have not been tested and no guarantee as to their operability or efficiency can be given.

Made with Metropix ©2024



98 High Street
Southwold
Suffolk
IP18 6DP
01502 723292
southwold@durrants.com
<https://durrants.com/>