



Jubilee Way | Halesworth | Holton | IP19 8FE

£104,000

DURRANTS
SINCE 1853

Key features

- Shared ownership- 40% Share
- New build
- High Specification
- Popular Village Location

Description

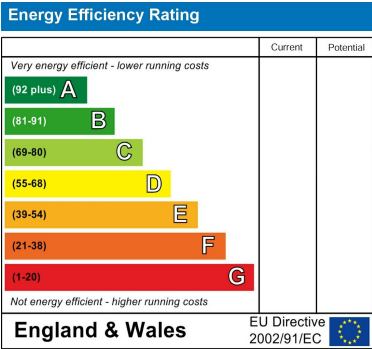
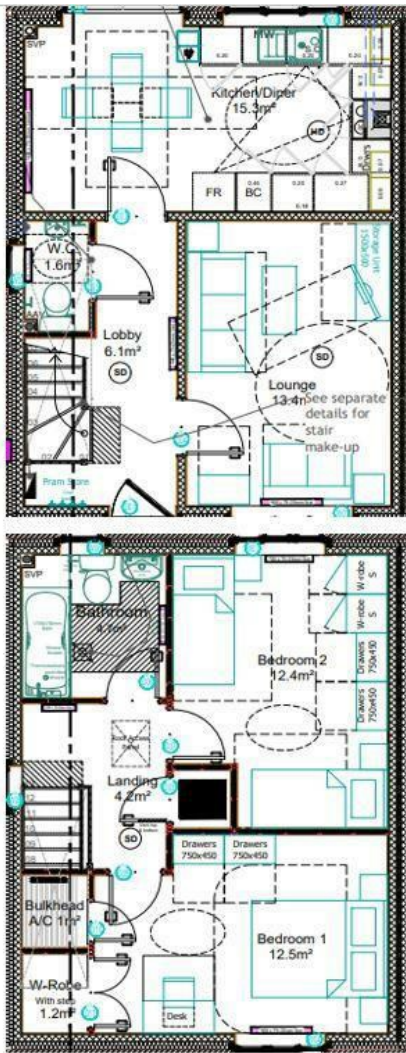
20 Jubilee Way is a spacious two bed end terrace home, situated in the popular village of Holton.

The property is a shared ownership home and offers buyers an affordable way to own a property situated within the sought after Suffolk Coast.

Directions



Floor plans



98 High Street
Southwold
Suffolk
IP18 6DP
01502 723292
southwold@durrants.com
<https://durrants.com/>