



Jubilee Way | Halesworth | Holton | IP19 8FE

£100,000

DURRANTS
SINCE 1853

Key features

- Shared ownership- 40% Share
- New build
- High Specification
- Popular Village Location

Description

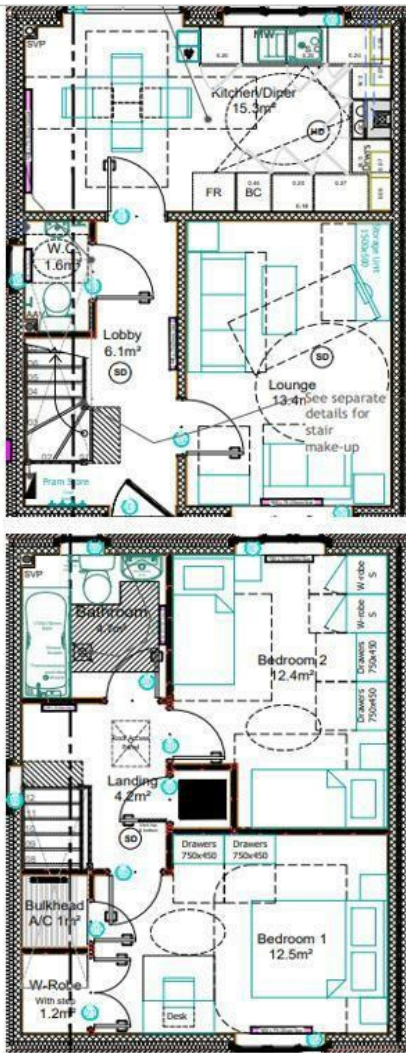
20 Jubilee Way is a spacious two bed mid terrace home, situated in the popular village of Holton.

The property is a shared ownership home and offers buyers an affordable way to own a property situated within the sought after Suffolk Coast.

Directions



Floor plans



Energy Efficiency Rating		
	Current	Potential
Very energy efficient - lower running costs		
(92 plus) A		
(81-91) B		
(69-80) C		
(55-68) D		
(39-54) E		
(21-38) F		
(1-20) G		
Not energy efficient - higher running costs		
England & Wales	EU Directive 2002/91/EC	



98 High Street
Southwold
Suffolk
IP18 6DP
01502 723292
southwold@durrants.com
<https://durrants.com/>