



The Pine, Jubilee Way | | Holton | IP19 8FE

£350,000

**DURRANTS**  
SINCE 1853

## Key features

- Exclusive development of 2 bed bungalows and 3 and 4 bed houses
- Charming village location close to Halesworth Town Centre
- off road parking & garages
- Open plan living
- Electric Car Charging Points

## Description

An exclusive development of 2 bed bungalows and 3 and 4 bed houses



## Directions

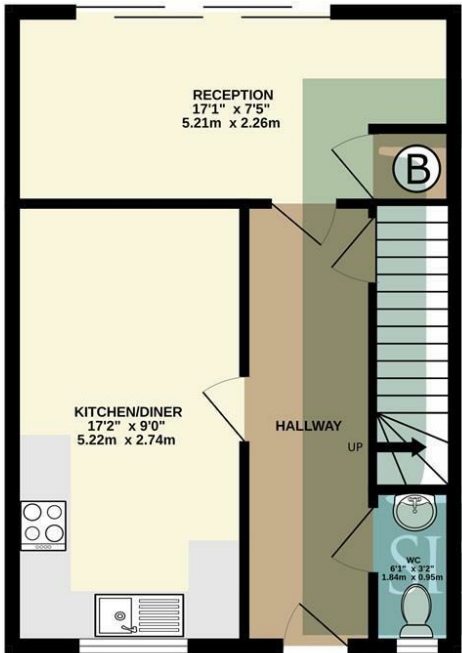




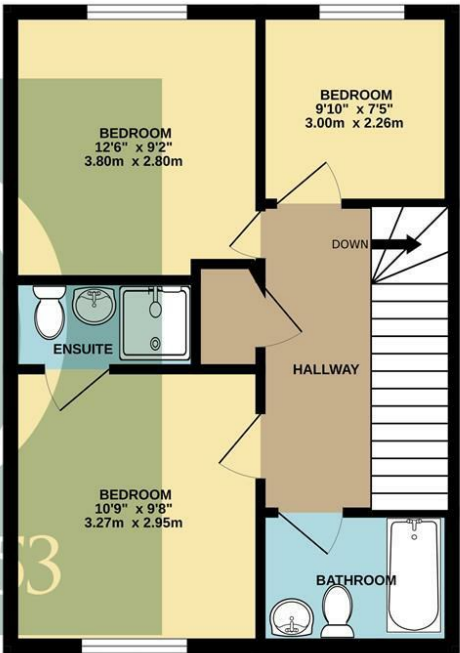


Floor plans

GROUND FLOOR  
420 sq.ft. (39.0 sq.m.) approx.



1ST FLOOR  
420 sq.ft. (39.0 sq.m.) approx.



TOTAL FLOOR AREA : 840 sq.ft. (78.1 sq.m.) approx.

Whilst every attempt has been made to ensure the accuracy of the floorplan contained here, measurements of doors, windows, rooms and any other items are approximate and no responsibility is taken for any error, omission or mis-statement. This plan is for illustrative purposes only and should be used as such by any prospective purchaser. The services, systems and appliances shown have not been tested and no guarantee as to their operability or efficiency can be given.

Made with Metropix ©2026

Energy Efficiency Rating		
	Current	Potential
Very energy efficient - lower running costs		
(92 plus) A		
(81-91) B		
(69-80) C		
(55-68) D		
(39-54) E		
(21-38) F		
(1-20) G		
Not energy efficient - higher running costs		
England & Wales	EU Directive 2002/91/EC	



98 High Street  
Southwold  
Suffolk  
IP18 6DP  
01502 723292  
southwold@durrants.com  
<https://durrants.com/>