



Albert Hall Mansions, Kensington Gore, SW7



# Albert Hall Mansions

---

This exceptional apartment lies behind a handsome Victorian red-brick facade and is located mere moments from one of England's oldest and most revered cultural epicentres, The Royal Albert Hall. Located on the sixth floor, this impeccably finished home has an abundance of natural light and wonderful views.

The formal, open-plan drawing room/dining room has beautiful oak parquet flooring, a marble fireplace, and intricate cornicing on the ceiling. There is an additional sitting room/study with custom-built cabinetry and a marble fireplace and it benefits from unrivalled views of the Royal Albert Hall.

## Albert Hall Mansions

---

A separate bespoke kitchen has been handcrafted in Britain and comes with Miele appliances; underfloor heating is found throughout the home.

There are three generously proportioned en-suite bedrooms, the principal suite features a luxurious marble spa-like bathroom, and all three bedrooms have built-in storage. The property is accessible via lift and has a 24-hour concierge.





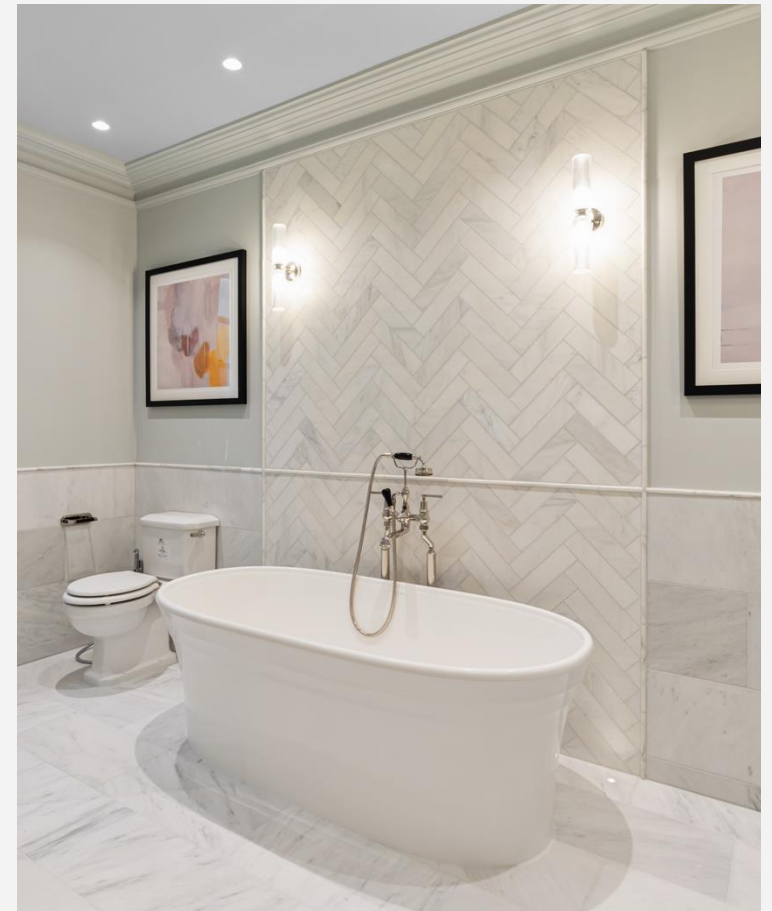


## Location

Albert Hall Mansions is ideally located on Kensington Gore next to the Royal Albert Hall, and within short reach of the many amenities, shops and restaurants High Street Kensington and South Kensington have to offer. Situated 0.6 miles from South Kensington and 0.8 miles from High Street Kensington underground stations, the property is also located 0.3 miles from Hyde Park.















## SIZE

**2,461 sq.ft**

## BEDROOMS

**3**

## BATHROOMS

**3**

## FEATURES

- **Fireplace**
- **Lift**
- **Security**
- **24-Hour Concierge**
- **Study**
- **Storage**
- **Wooden Flooring**
- **View of Albert Hall**

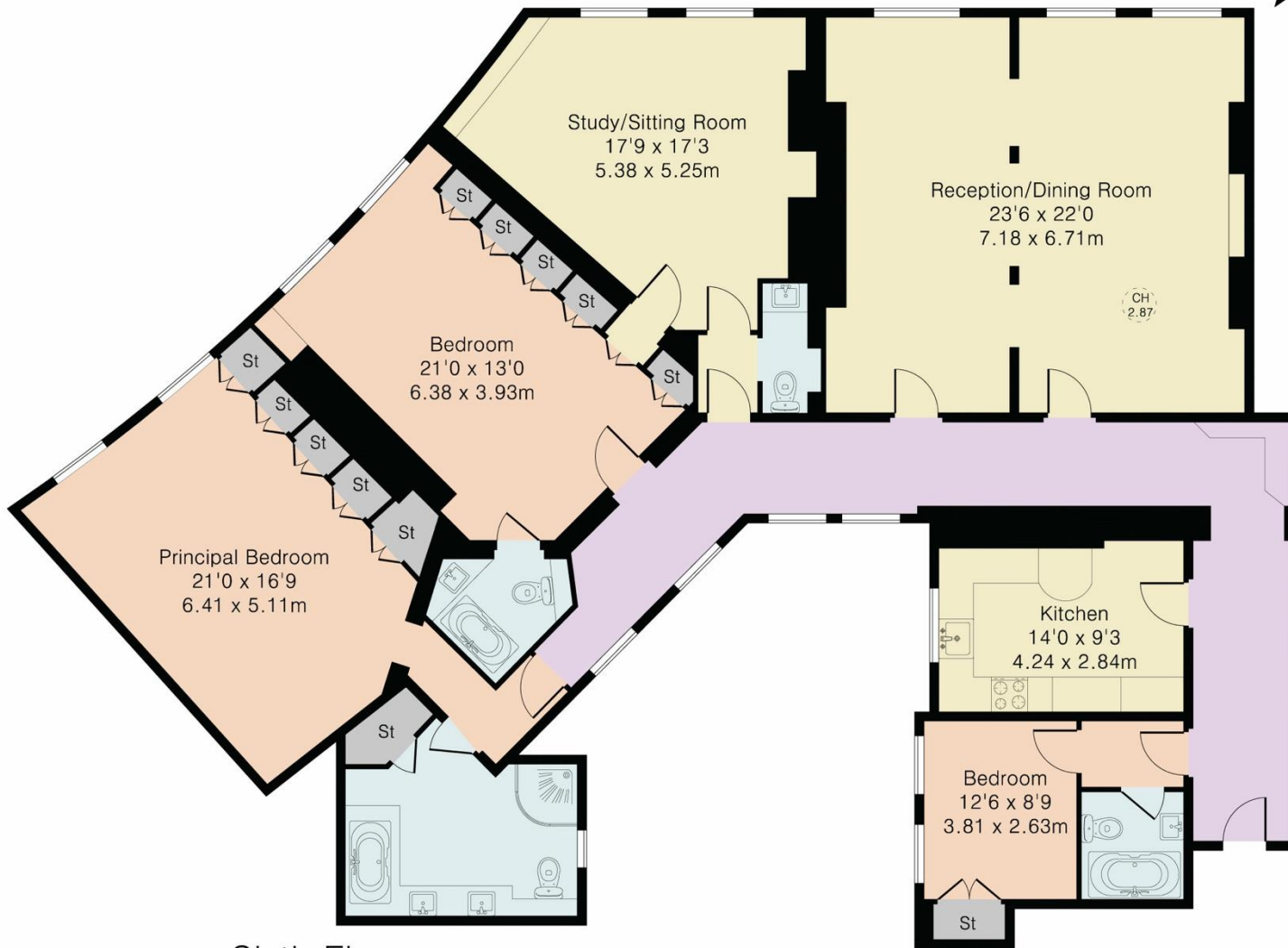
## TENURE

**Leasehold (983 Years Remaining)**

## PRICE:

**£6,250,000**

Approximate Gross Internal Area 2461 sq ft – 229 sq m



Sixth Floor

**LOCAL AUTHORITY:**  
**Royal Borough of**  
**Kensington & Chelsea**

**COUNCIL TAX BAND:**  
**H**

**EPC RATING**  
**C**

Score	Energy rating	Current	Potential
92+	A		
81-91	B		83 B
69-80	C	70 C	
55-68	D		
39-54	E		
21-38	F		
1-20	G		

© 2024 Sotheby's International Realty Affiliates LLC. All rights reserved. Sotheby's International Realty® and the Sotheby's International Realty Logo are service marks licensed to Sotheby's International Realty Affiliates LLC and used with permission. Sotheby's International Realty Affiliates LLC fully supports the principles of the Fair Housing Act and the Equal Opportunity Act. Each office is independently owned and operated.

Images, floorplans, and descriptions in this brochure are for illustrative purposes only and may not accurately reflect the current property. All dimensions are approximate and should be independently verified. This material does not form part of any contract or warranty. Prospective buyers are advised to conduct their own due diligence and seek independent legal advice.

Exclusively listed with  
United Kingdom Sotheby's International Realty

---



Stacy Sims

+44 (0) 7828 698 602

[ss@sothebysrealty.co.uk](mailto:ss@sothebysrealty.co.uk)



Kay Smith

+44 (0) 7802 820 488

[ks@sothebysrealty.co.uk](mailto:ks@sothebysrealty.co.uk)

United  
Kingdom

**Sotheby's**  
INTERNATIONAL REALTY